

**sbp**  
schlaich  
bergemann partner

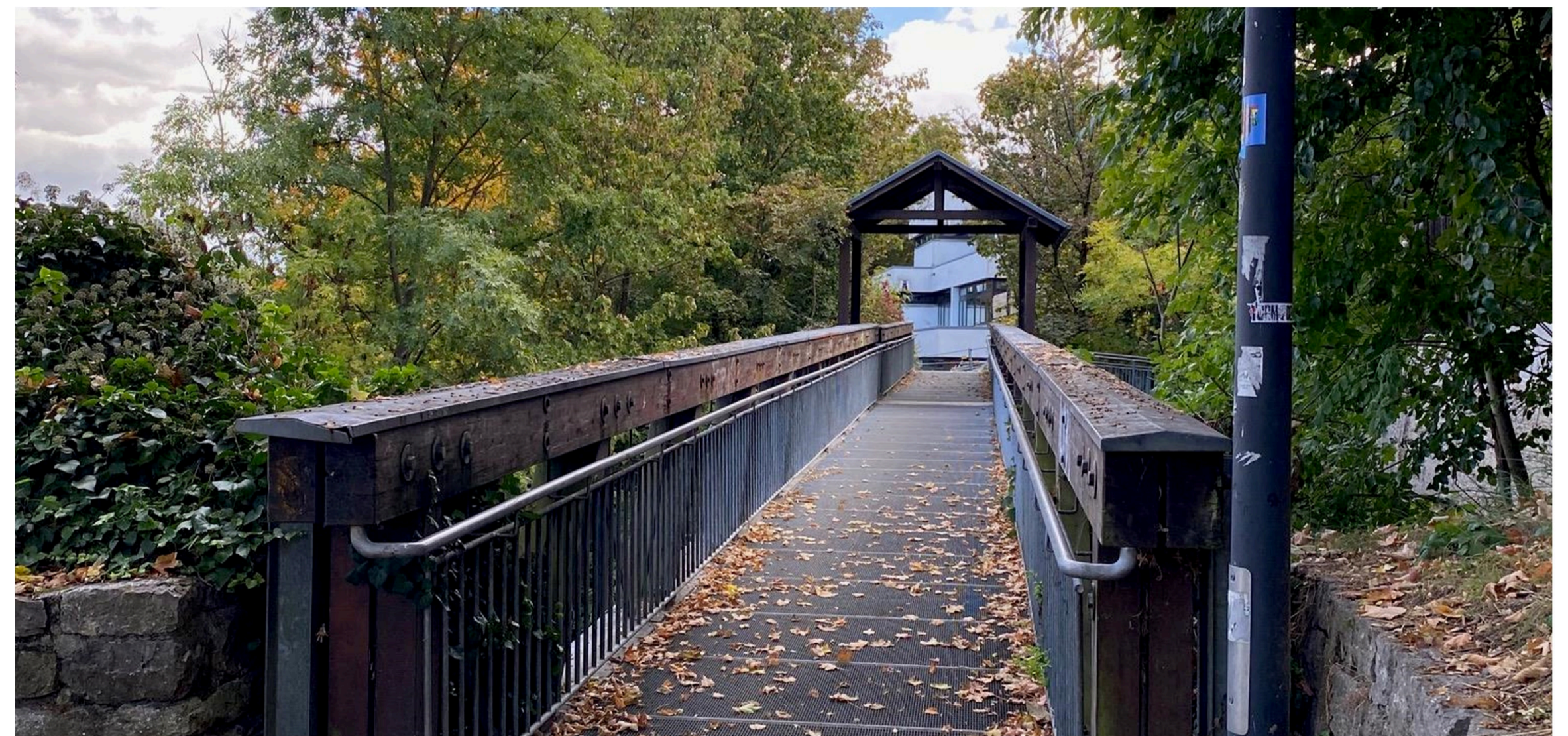
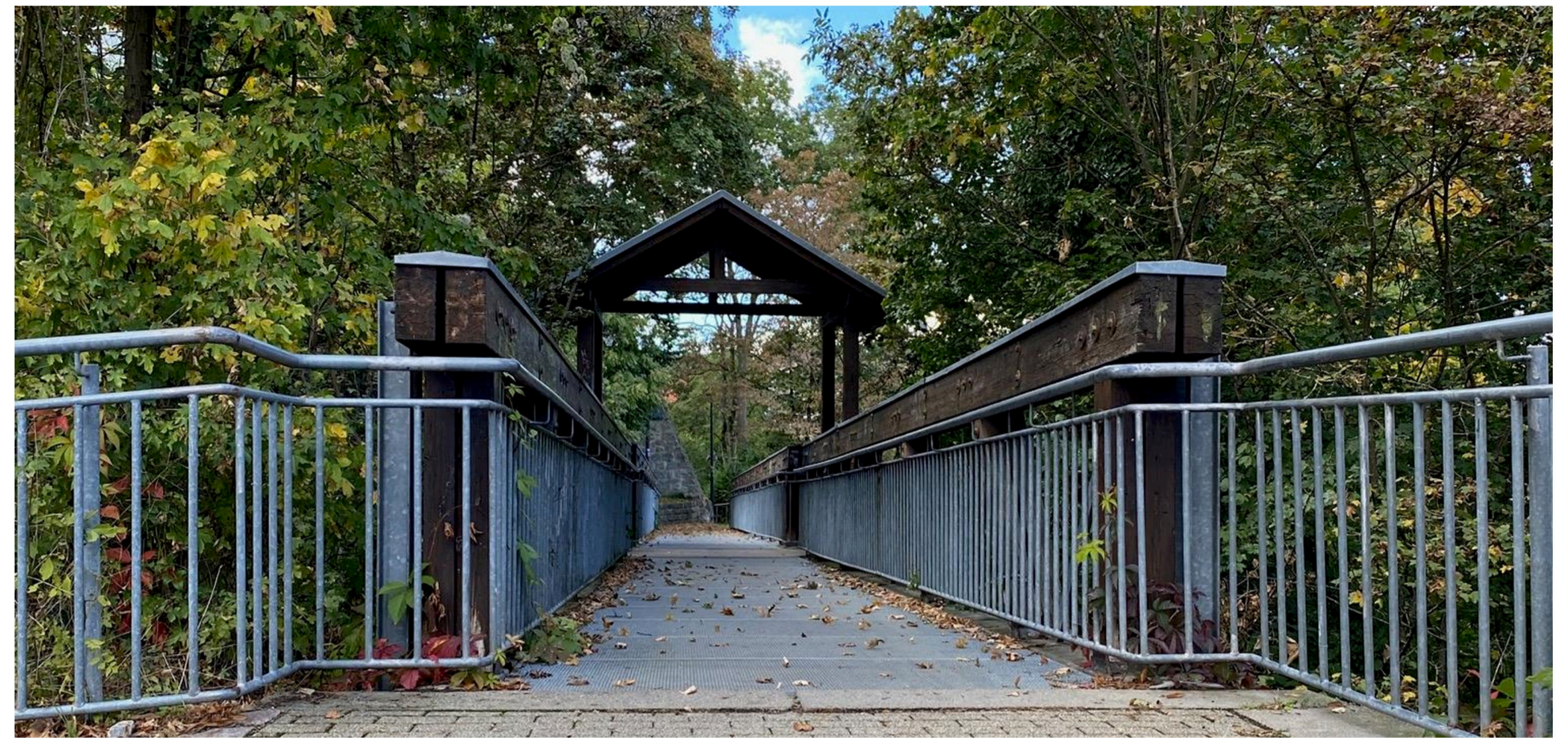
Stadtgrabensteg Besigheim

The image features a series of thin, light gray lines that create a grid-like structure. The lines are not perfectly straight, with some showing a slight curve. A horizontal line runs across the middle of the page, with several vertical lines intersecting it. The overall effect is that of a technical drawing or a conceptual architectural plan, possibly representing a bridge or a walkway structure.

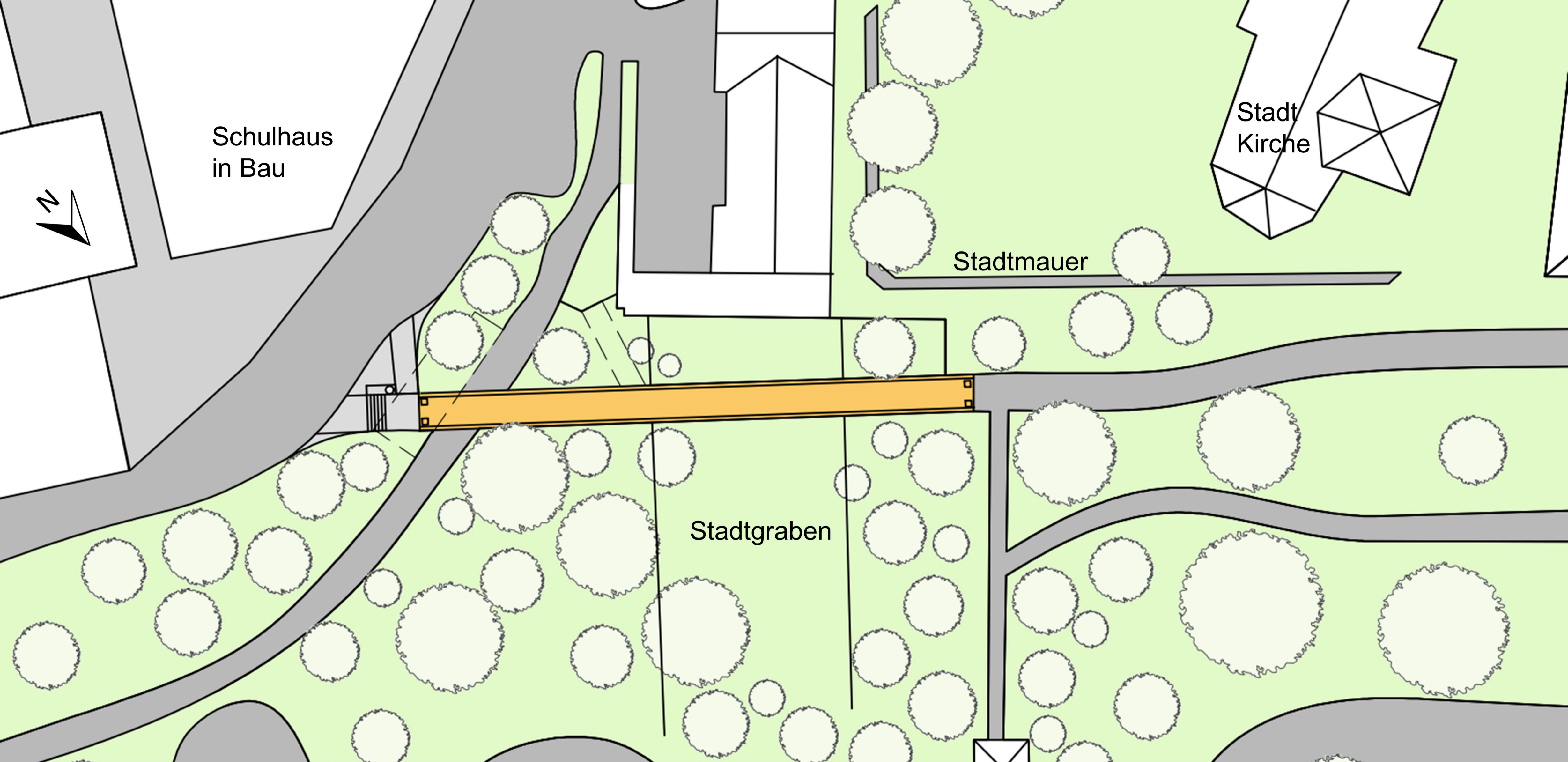












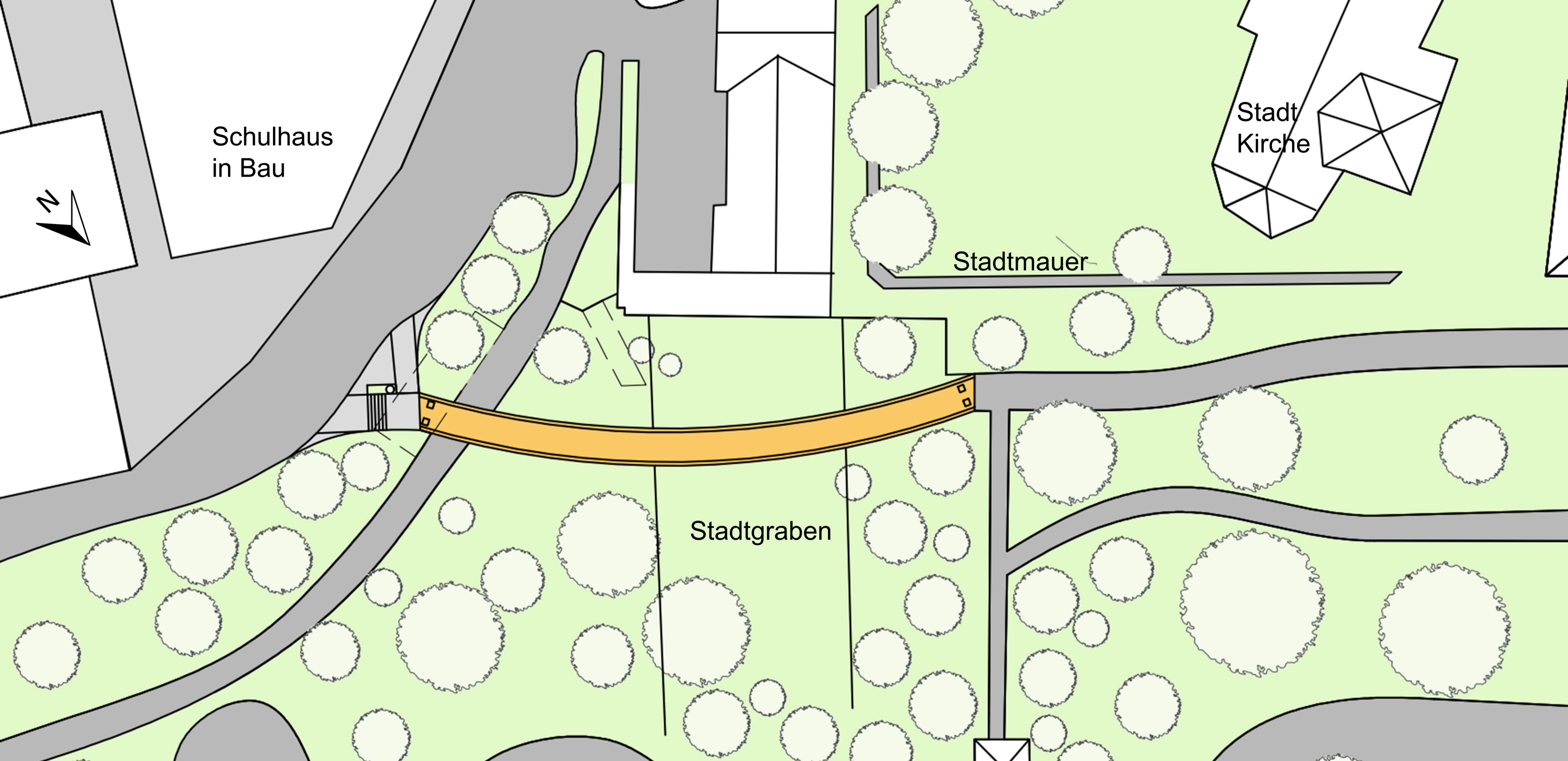
Schulhaus  
in Bau

Stadt  
Kirche

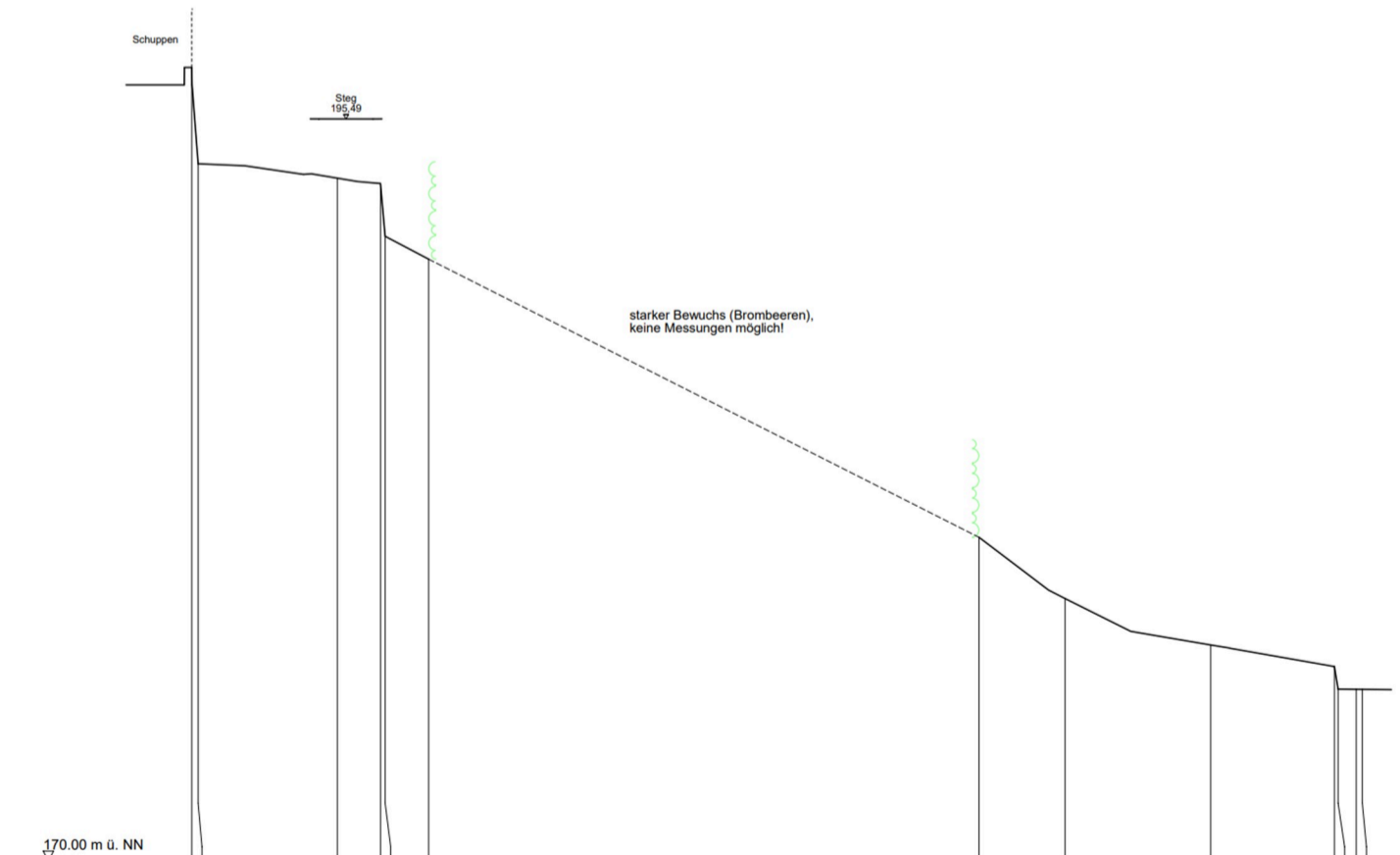
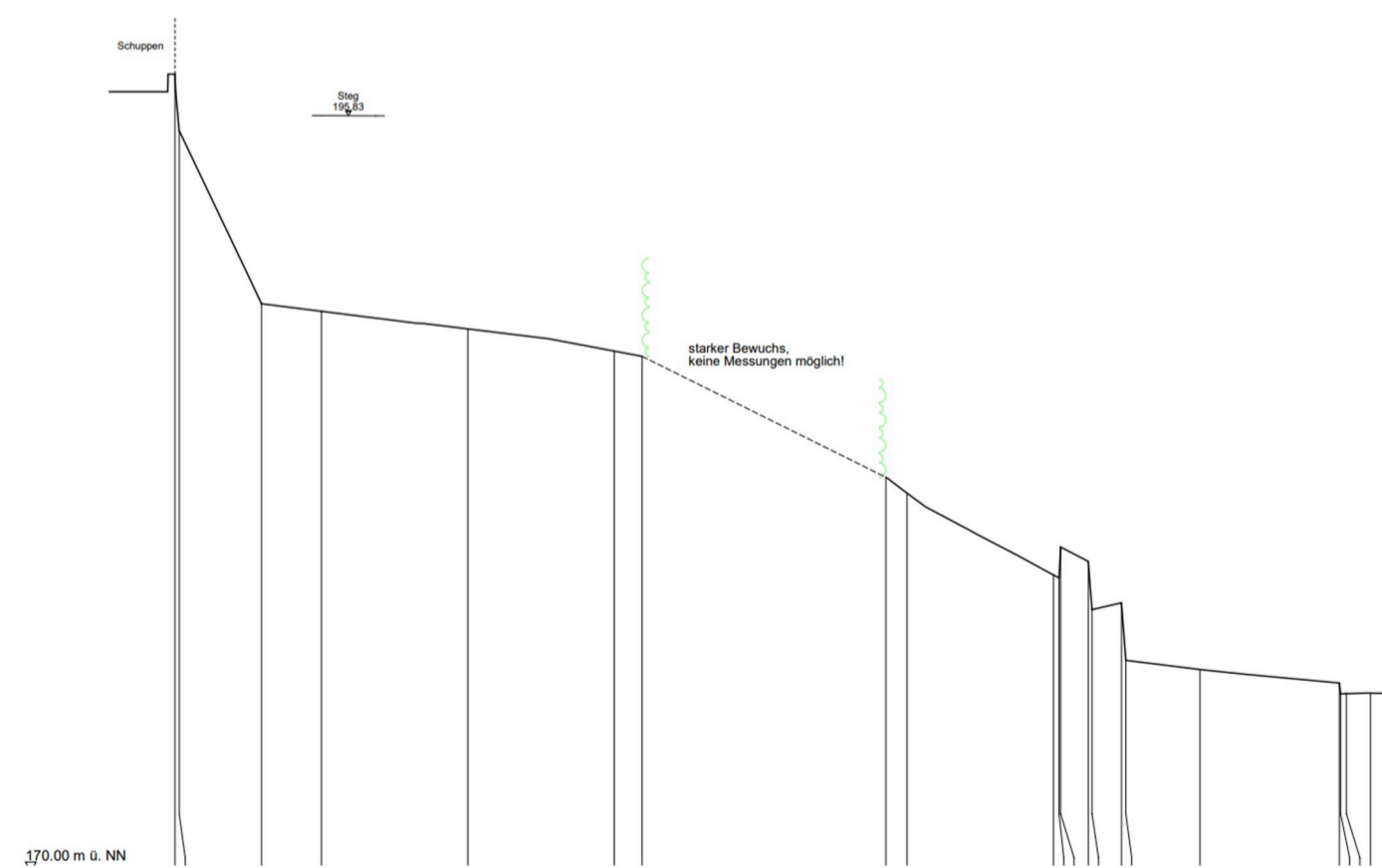
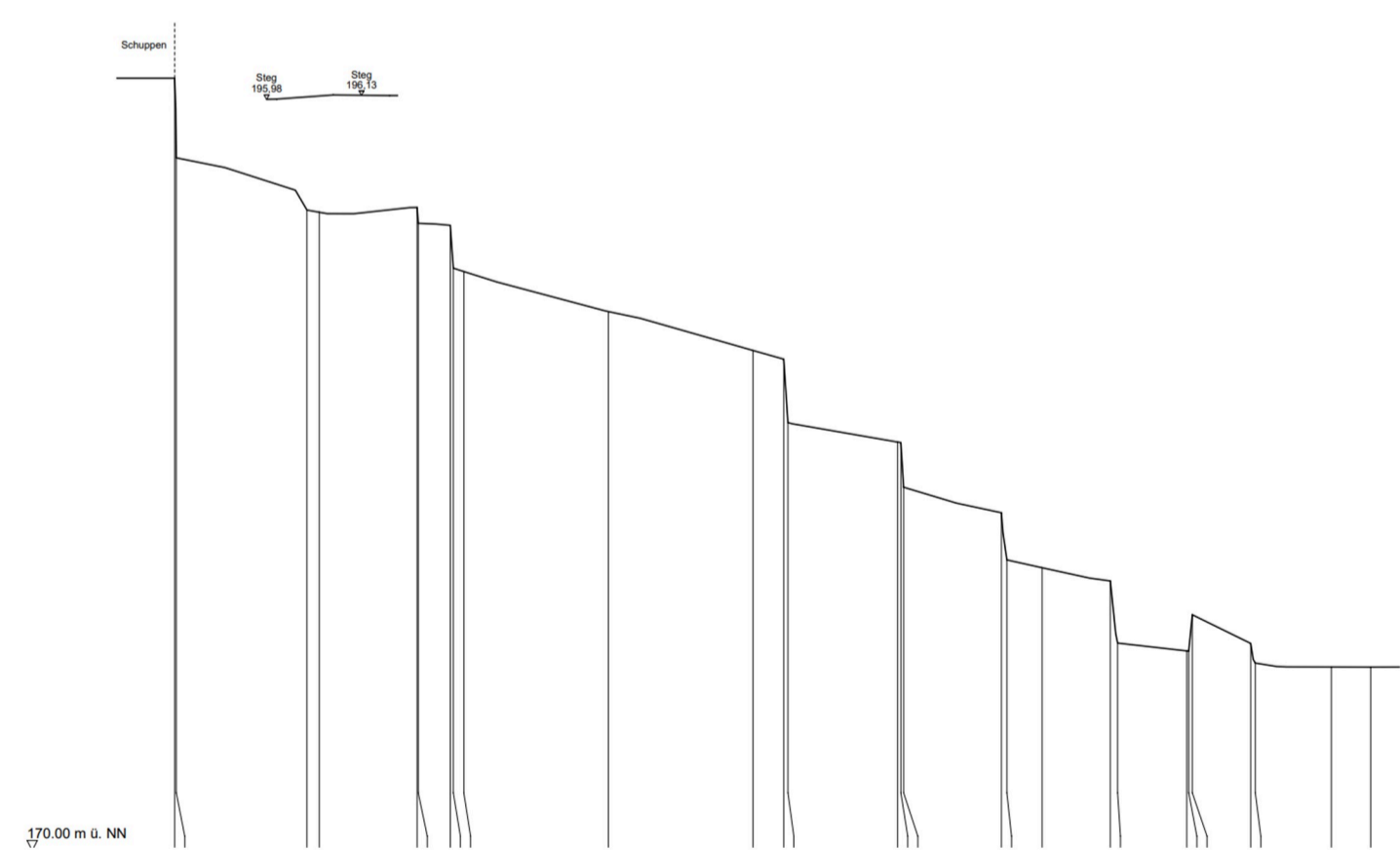
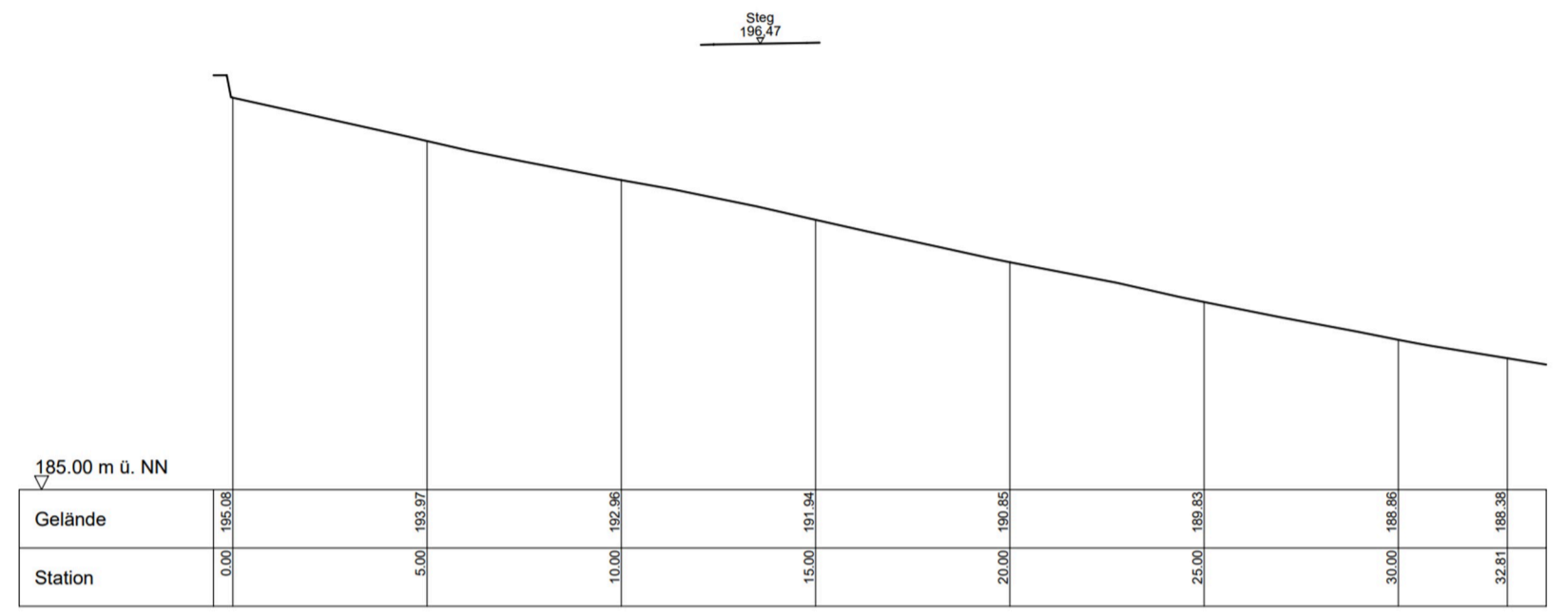
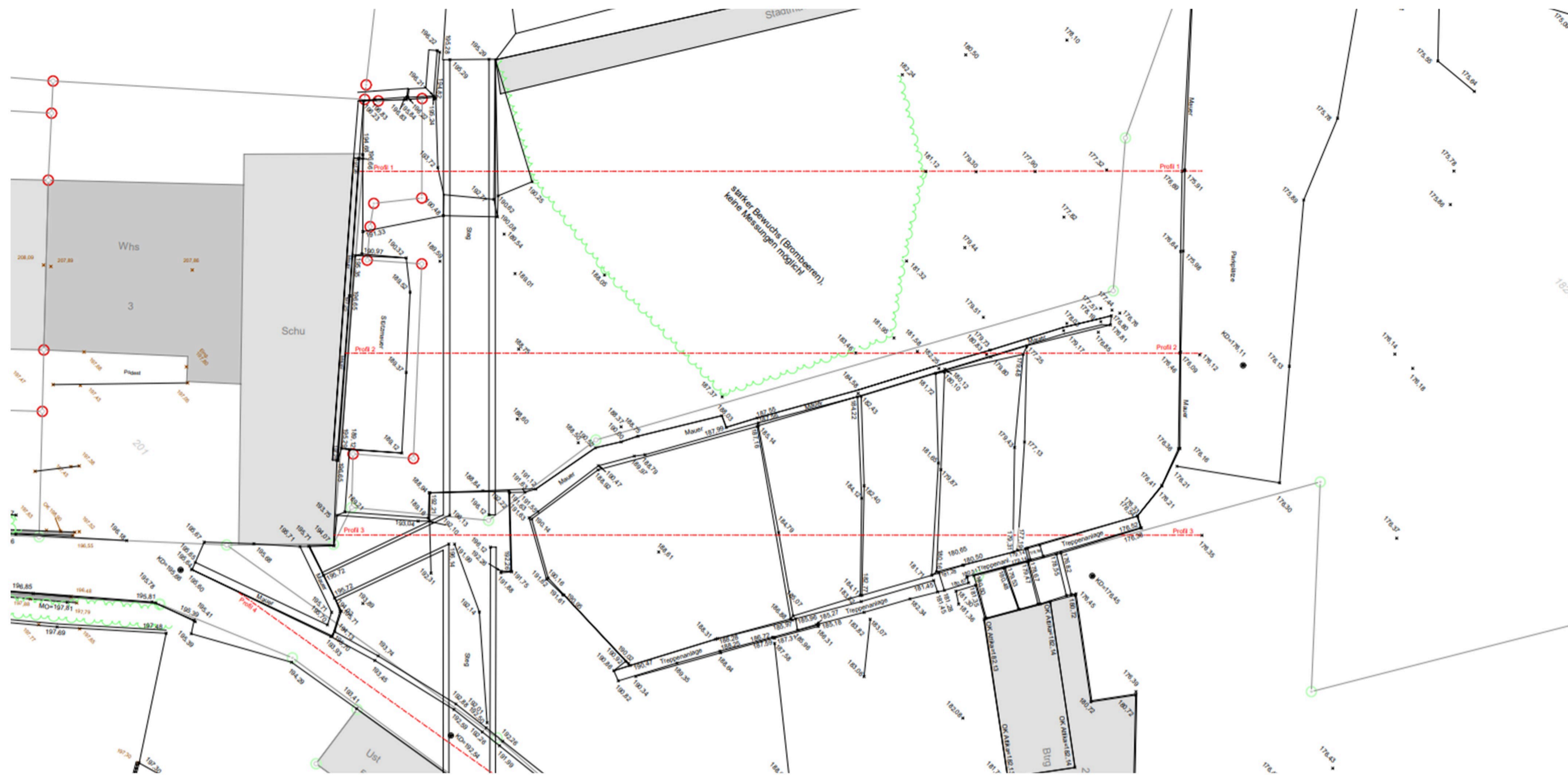
Stadtmauer

Stadtgraben

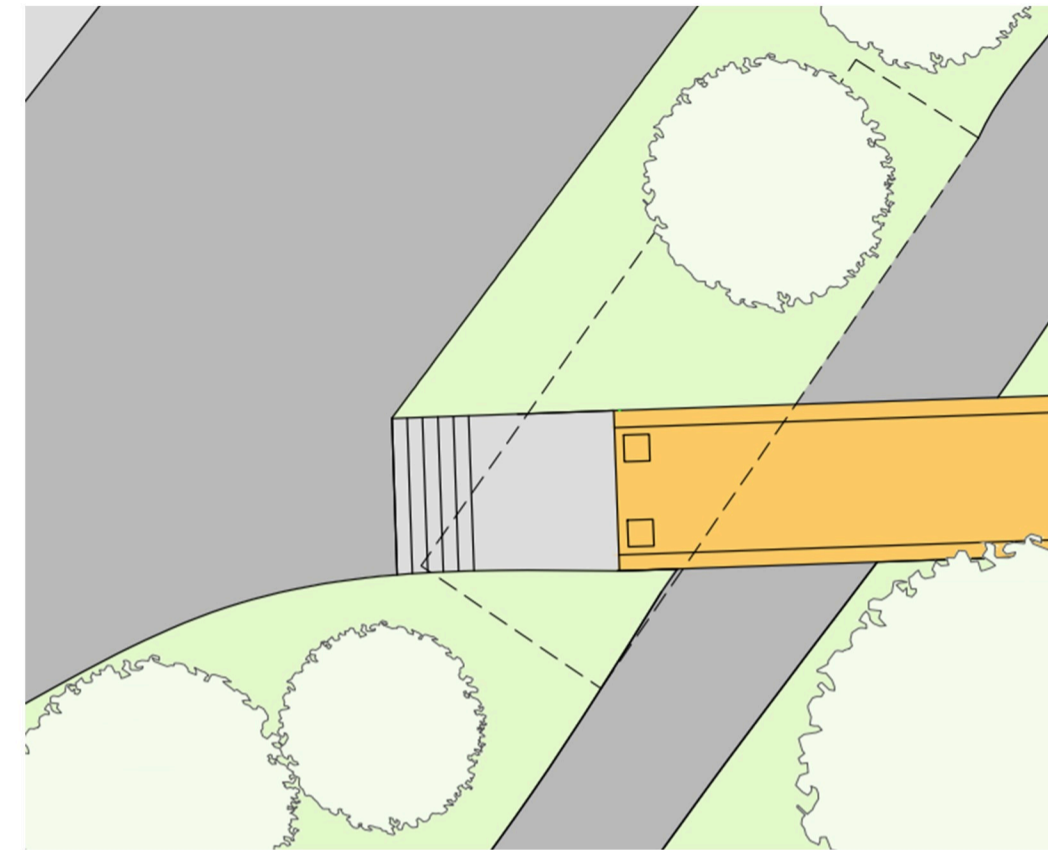




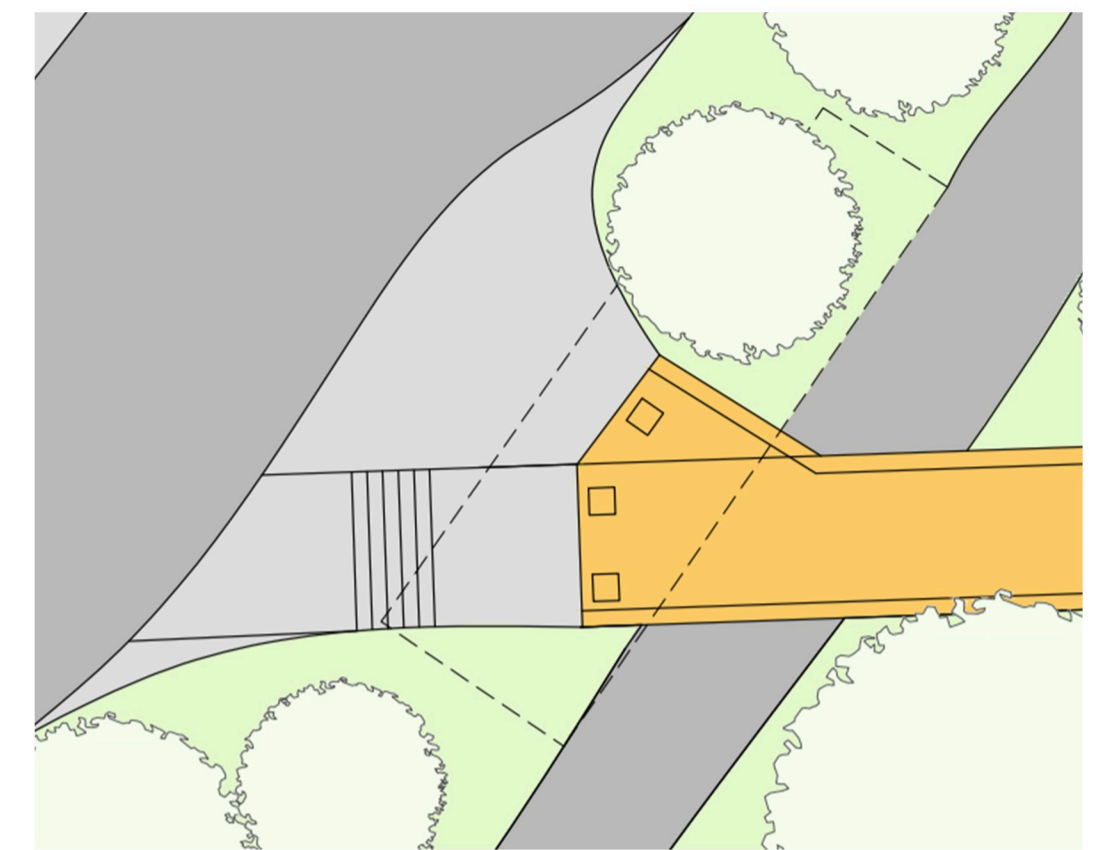




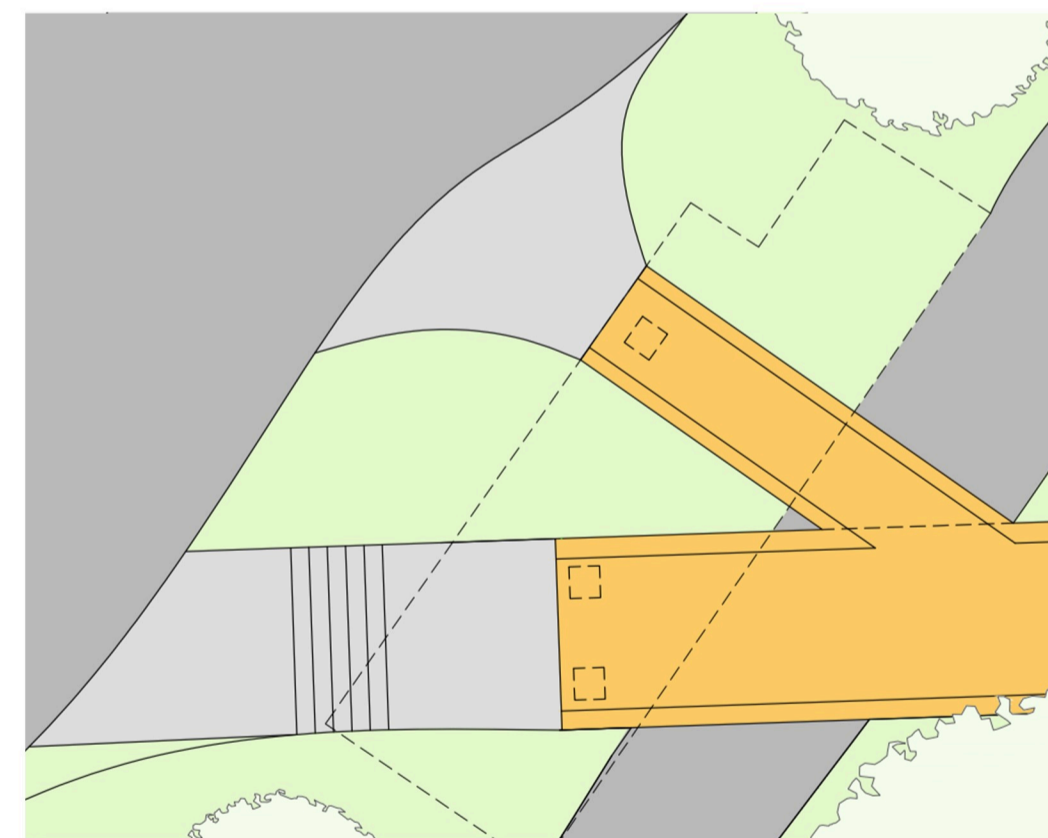




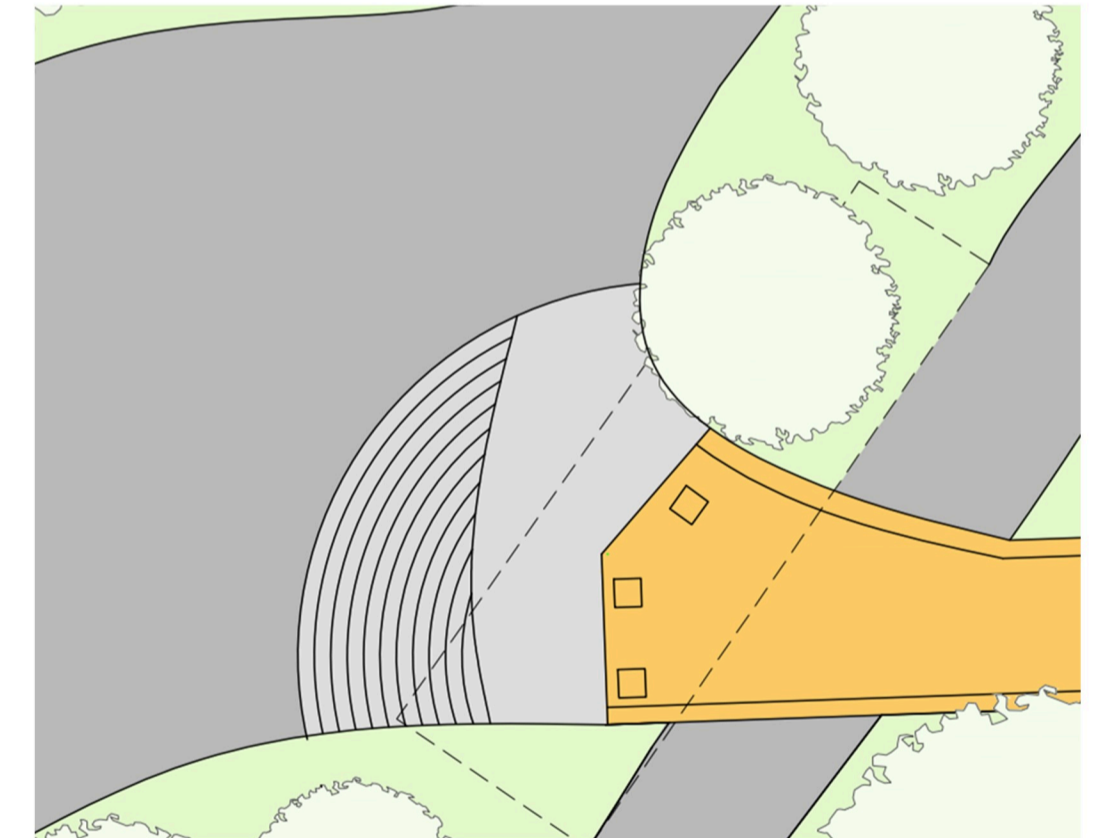
Variante 1



Variante 2

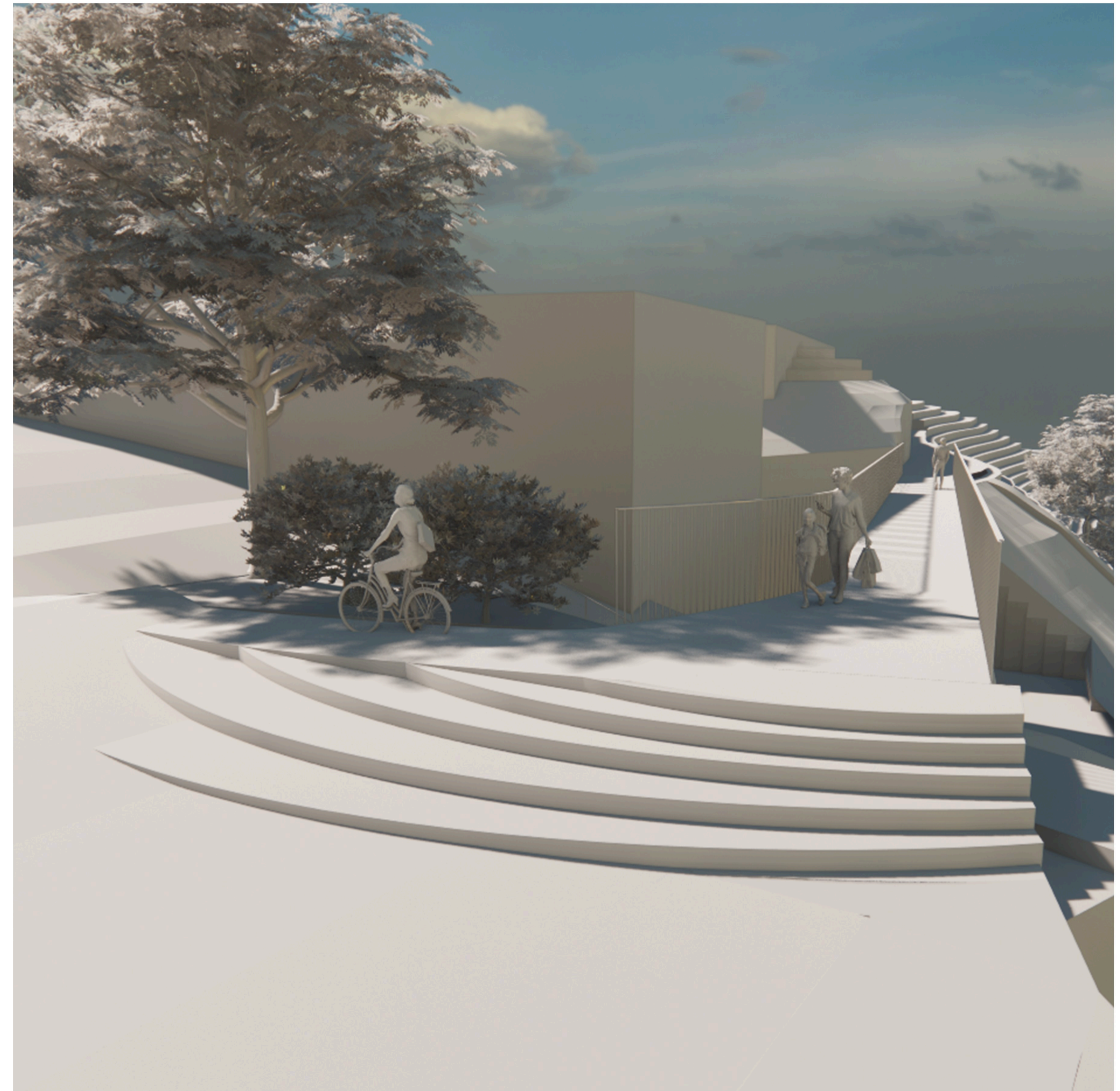


Variante 3

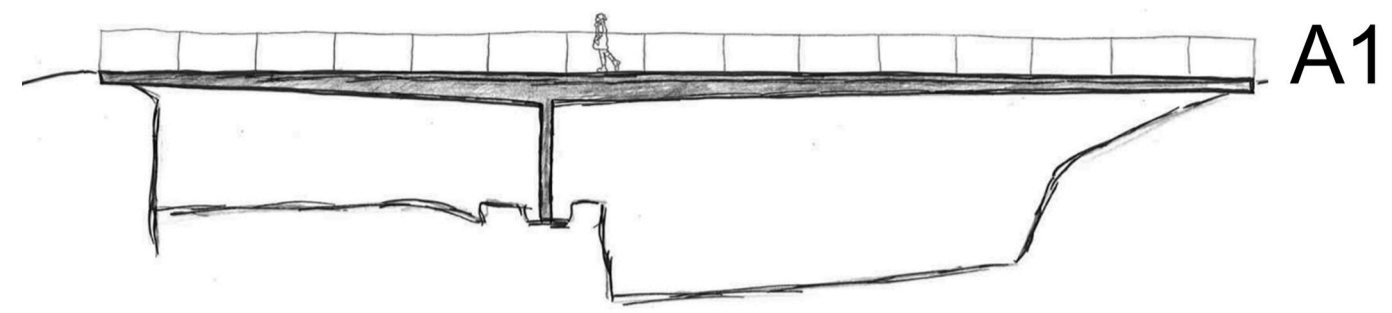


Variante 4

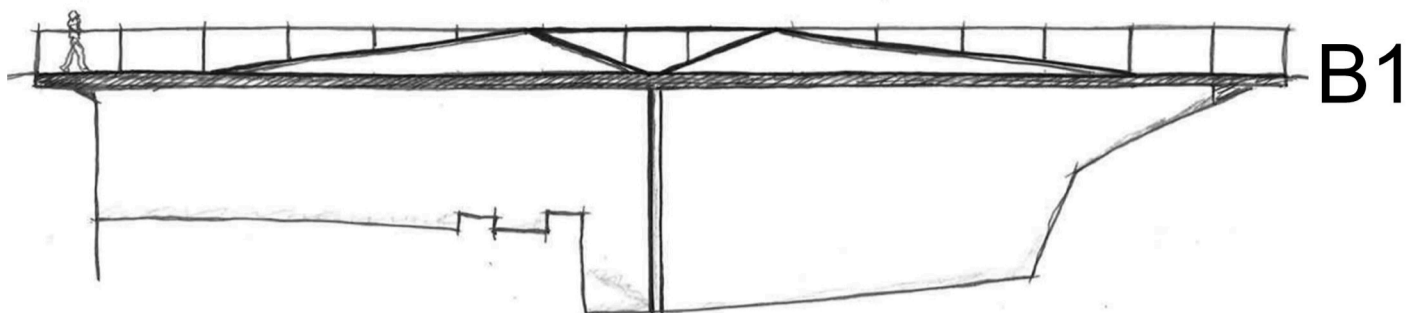




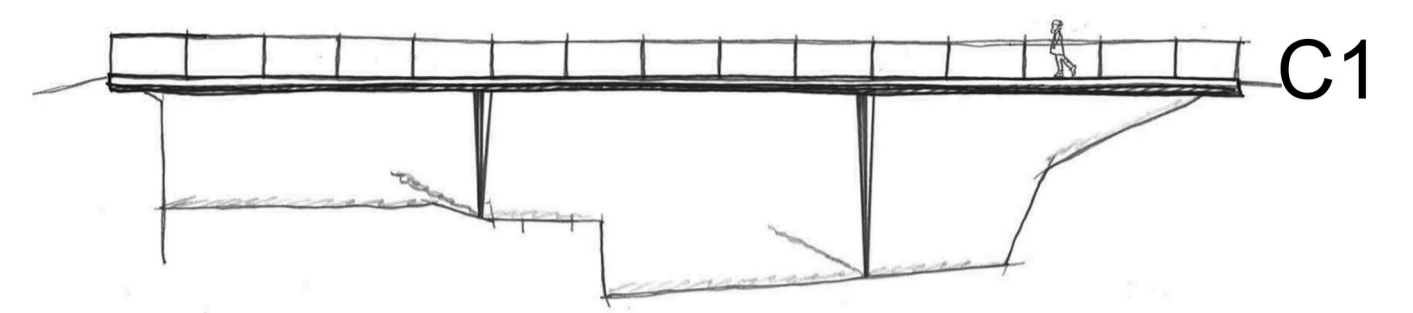




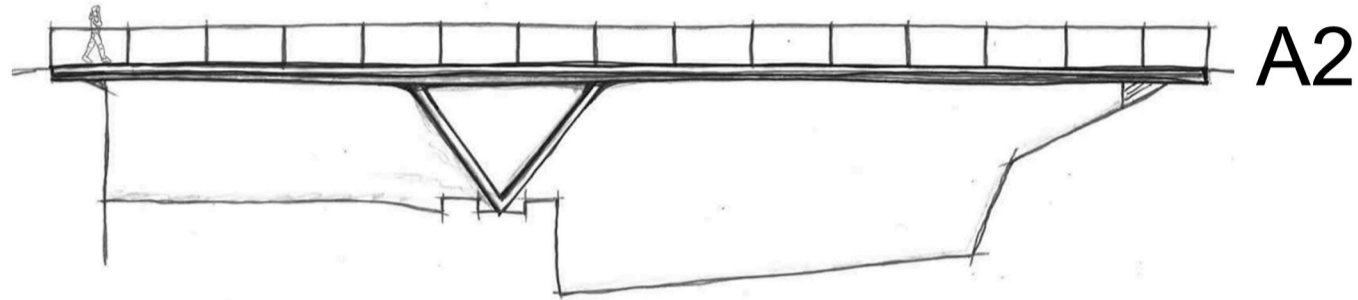
A1



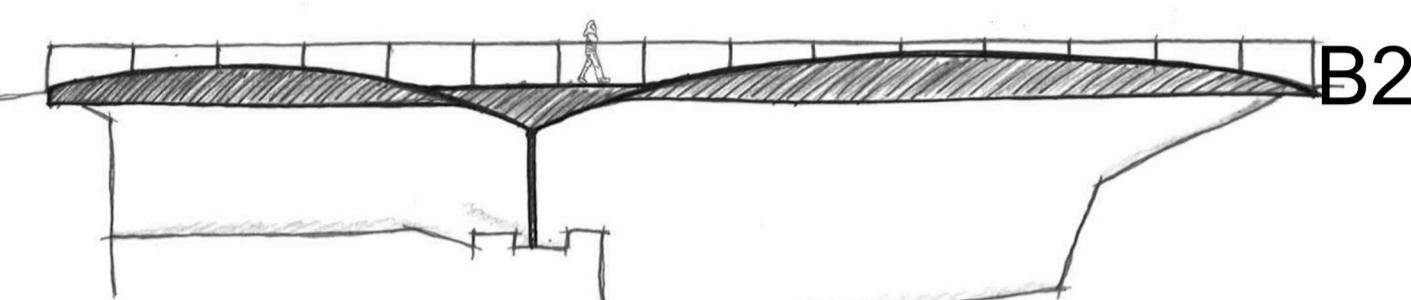
B1



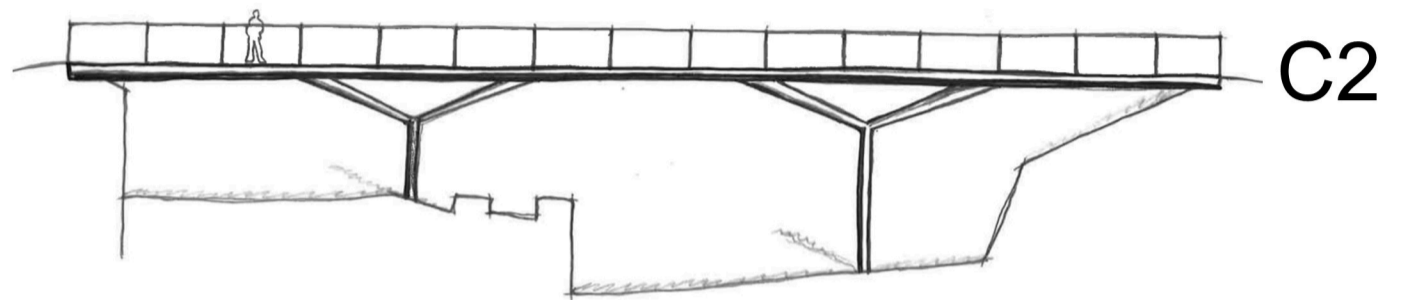
C1



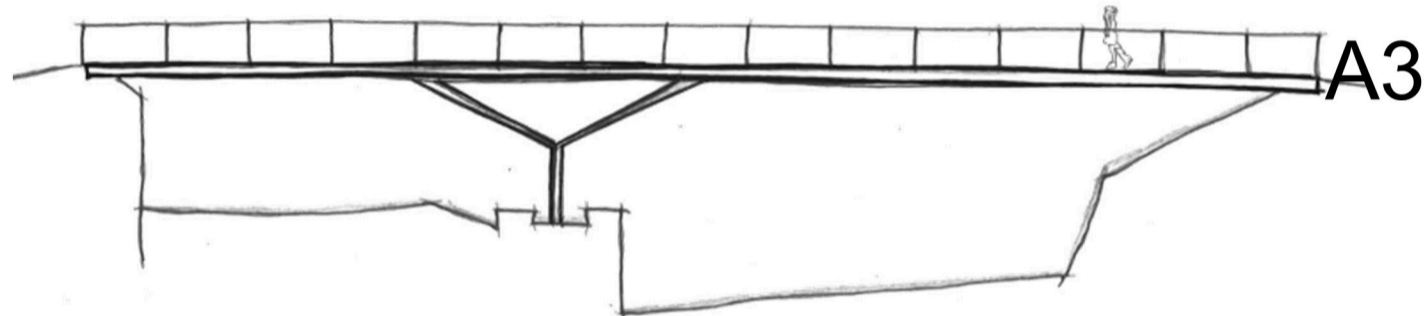
A2



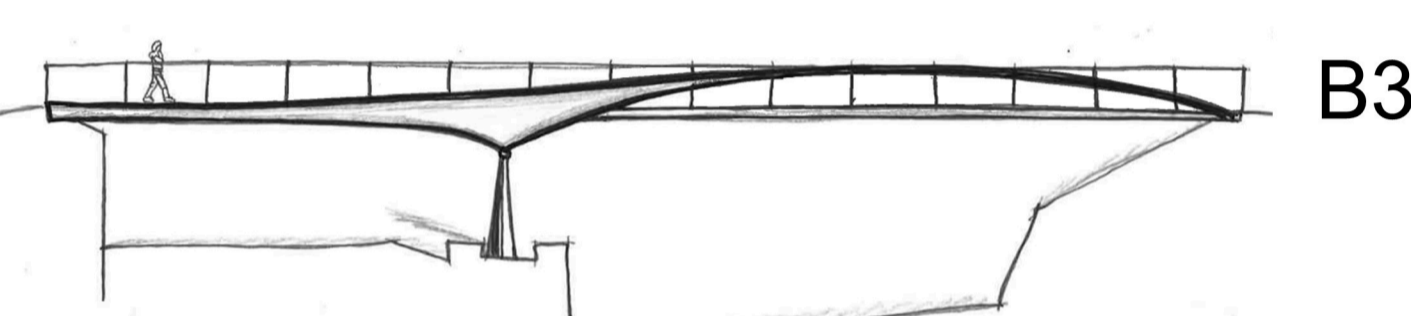
B2



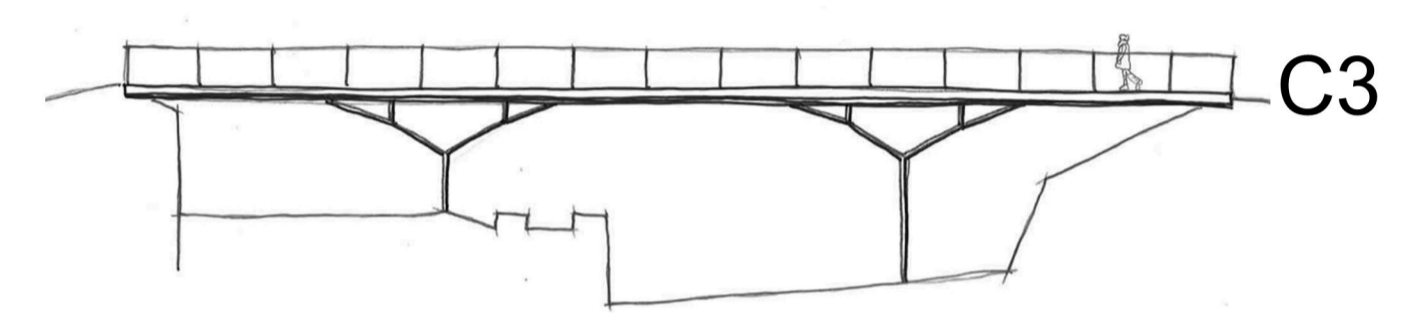
C2



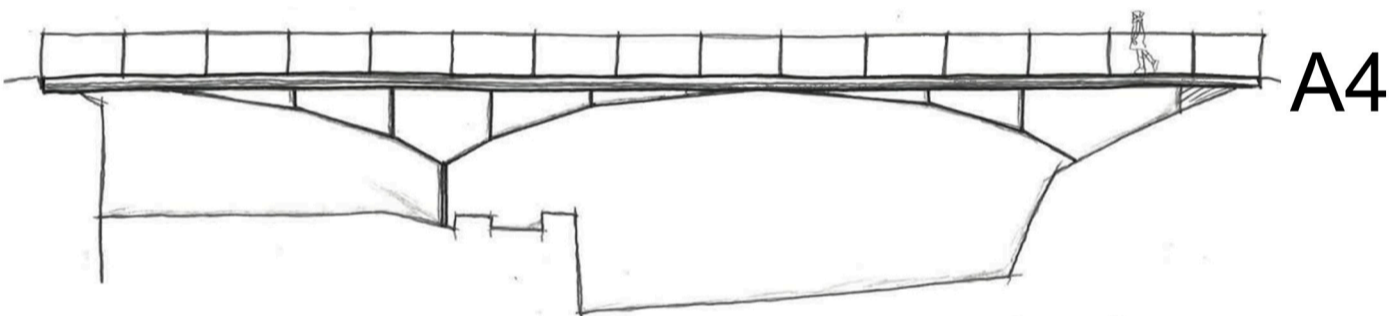
A3



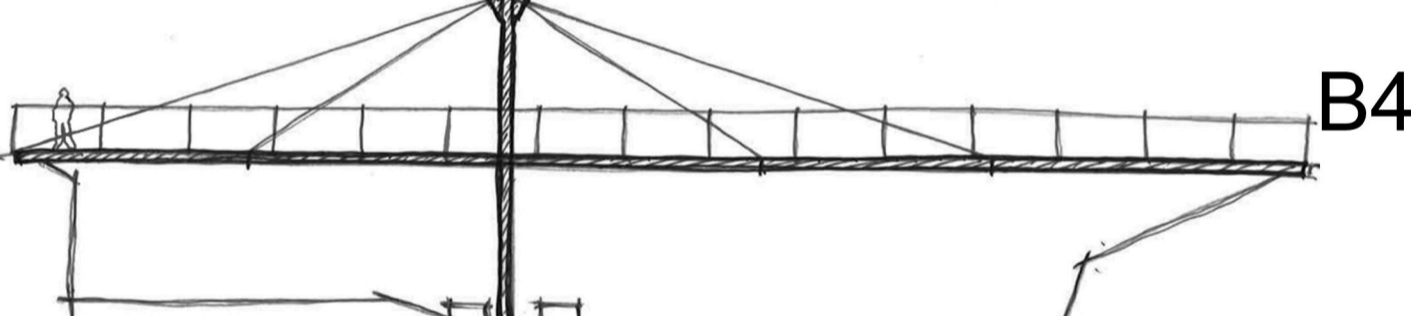
B3



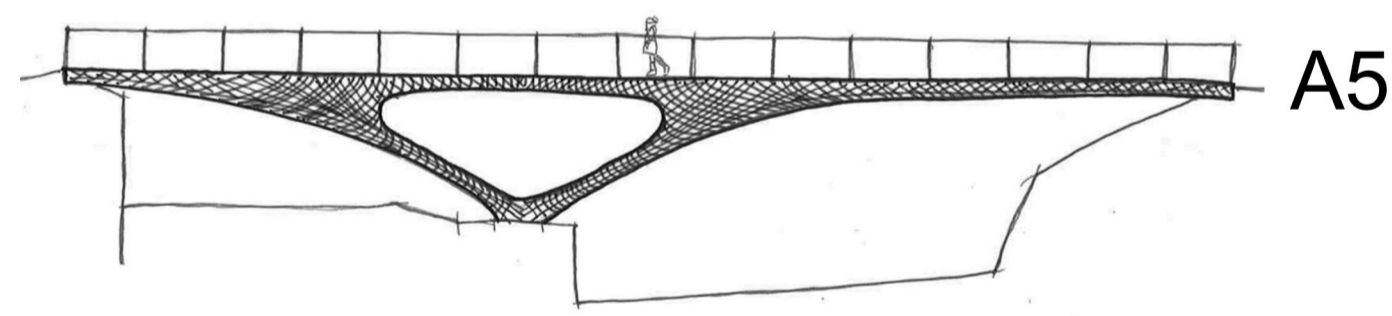
C3



A4

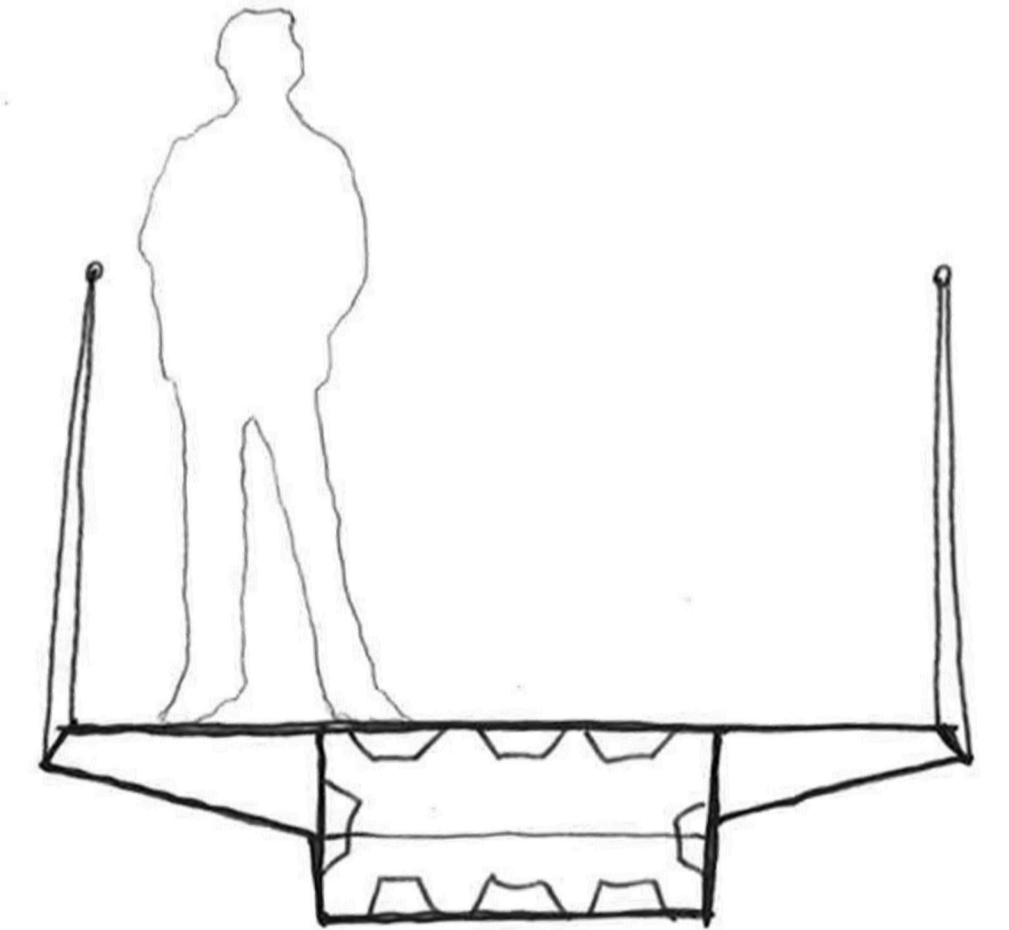
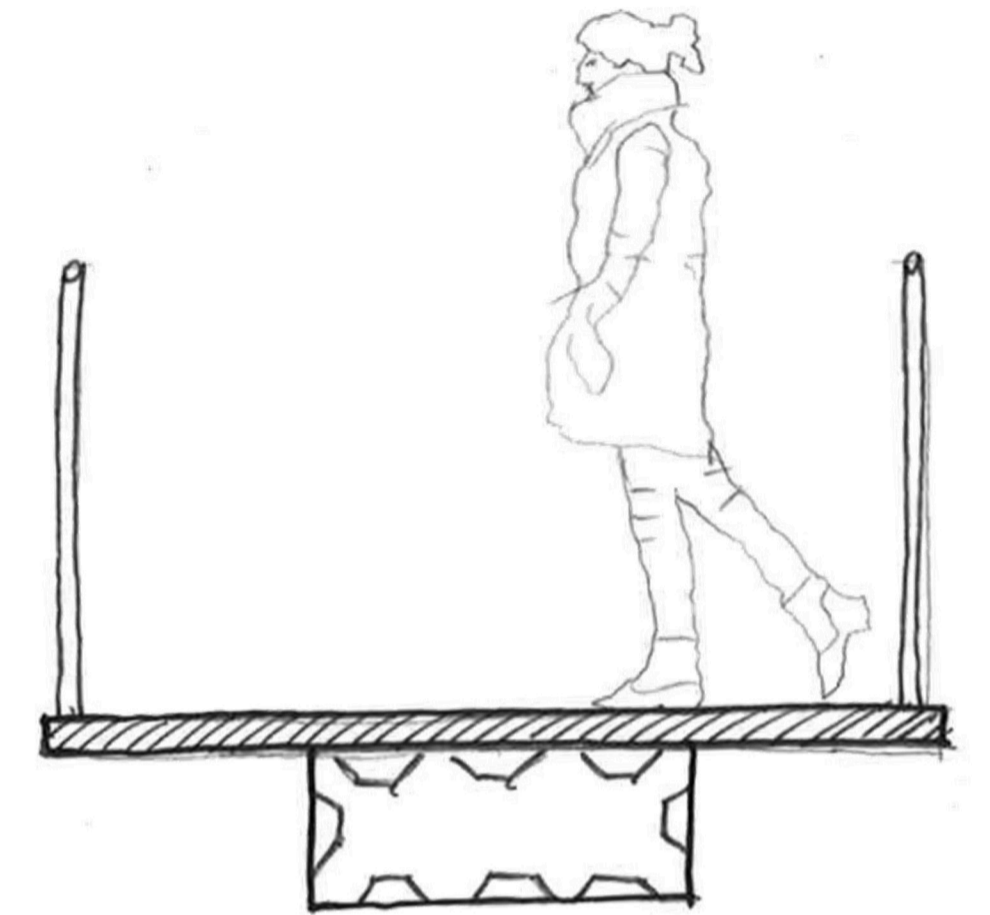
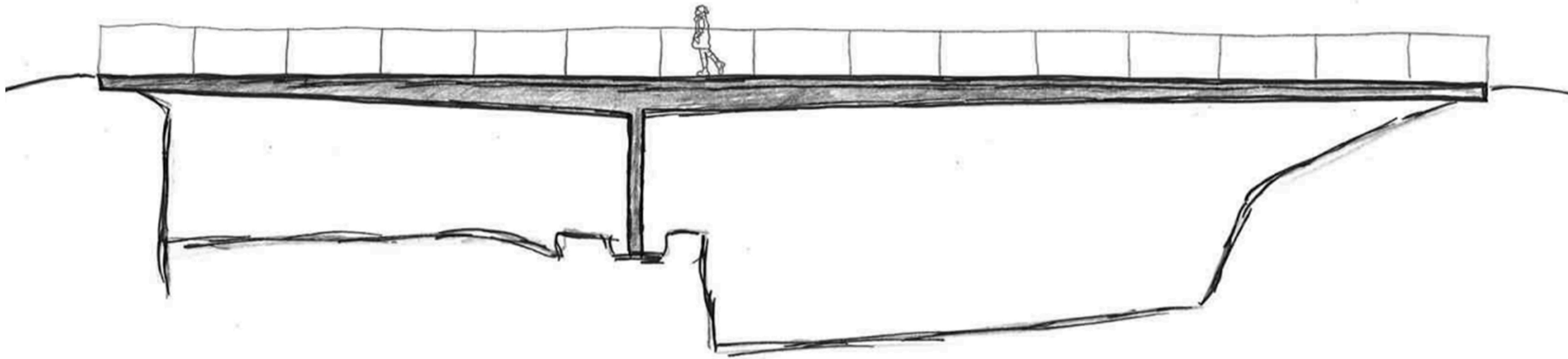


B4



A5





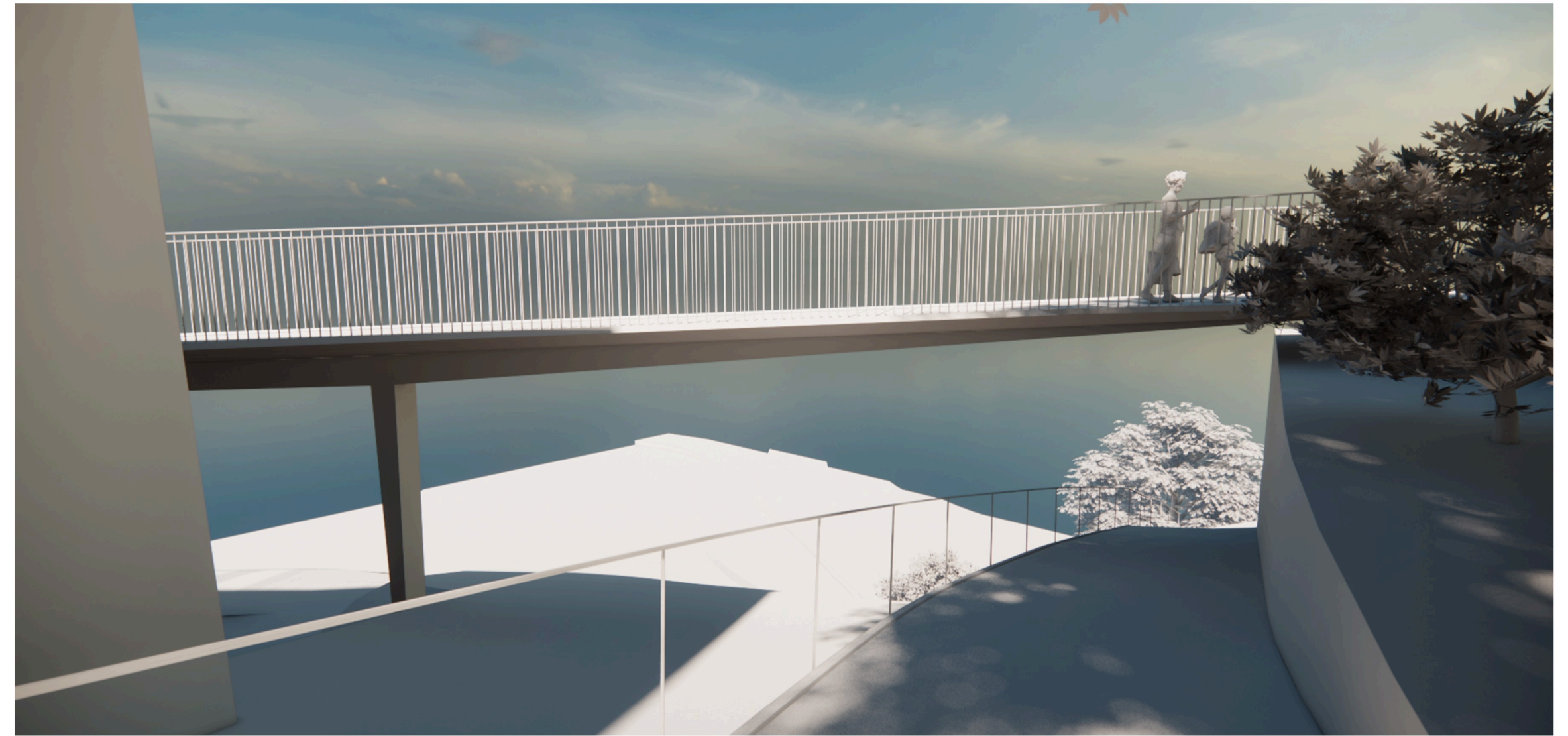
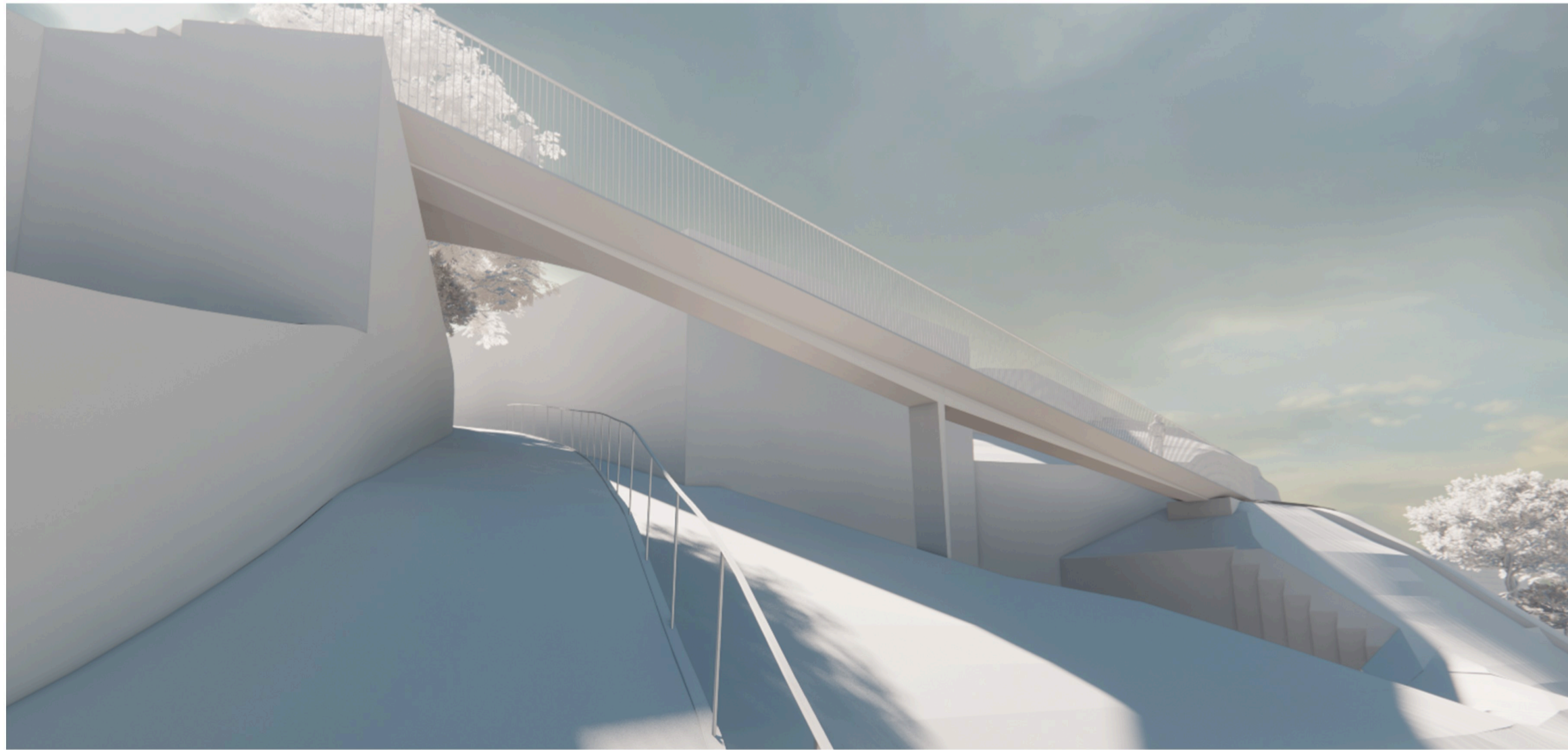
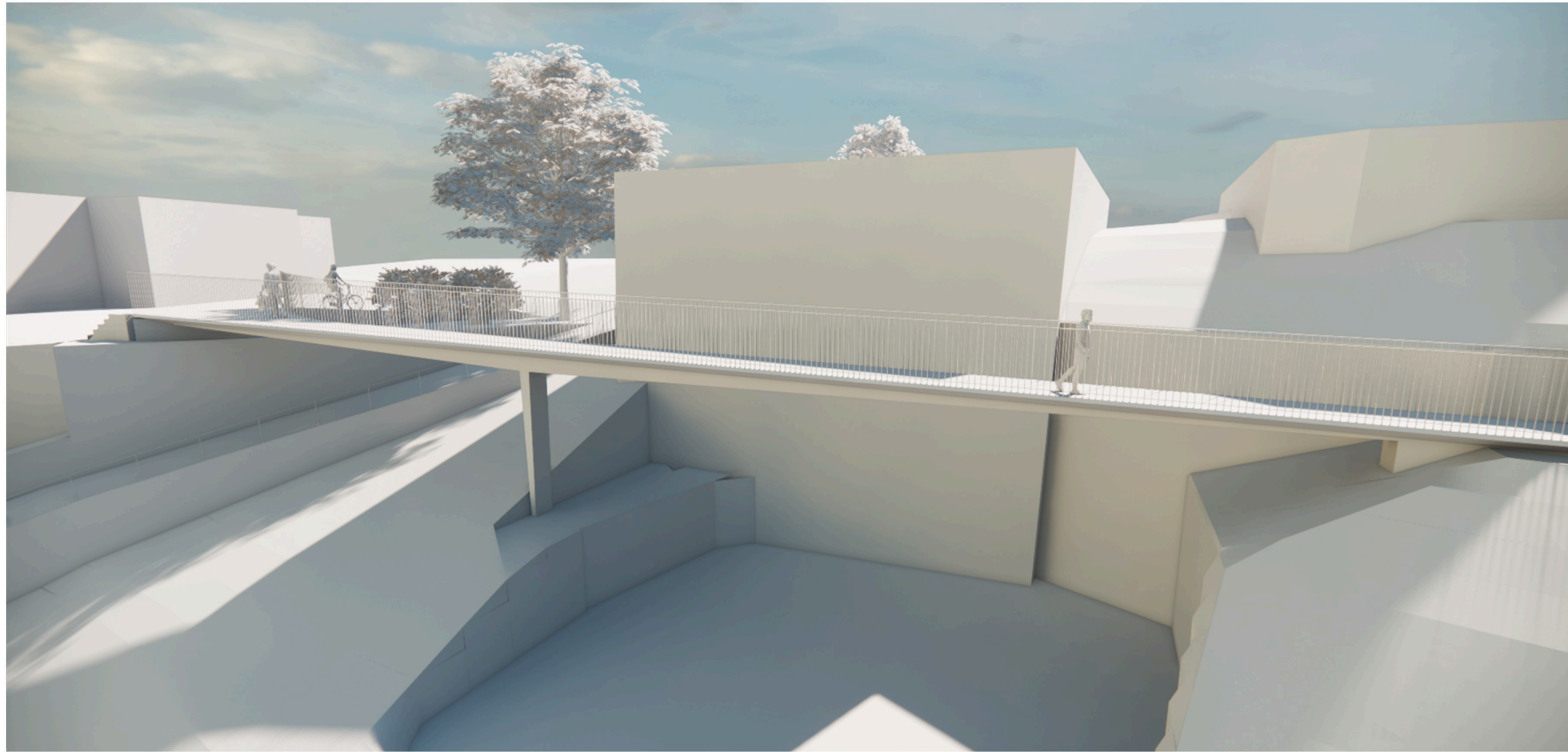
**Tragwerk**  
**Querschnitt**

gevoutete Balkenbrücke  
Hohlkasten

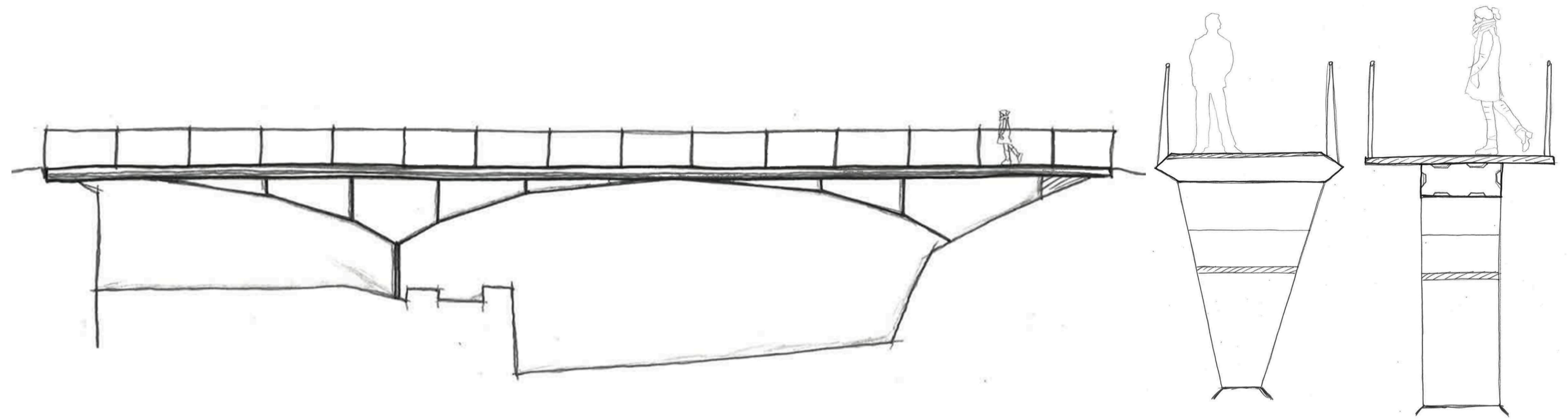
**Material**

Stahl, Beton, Granit









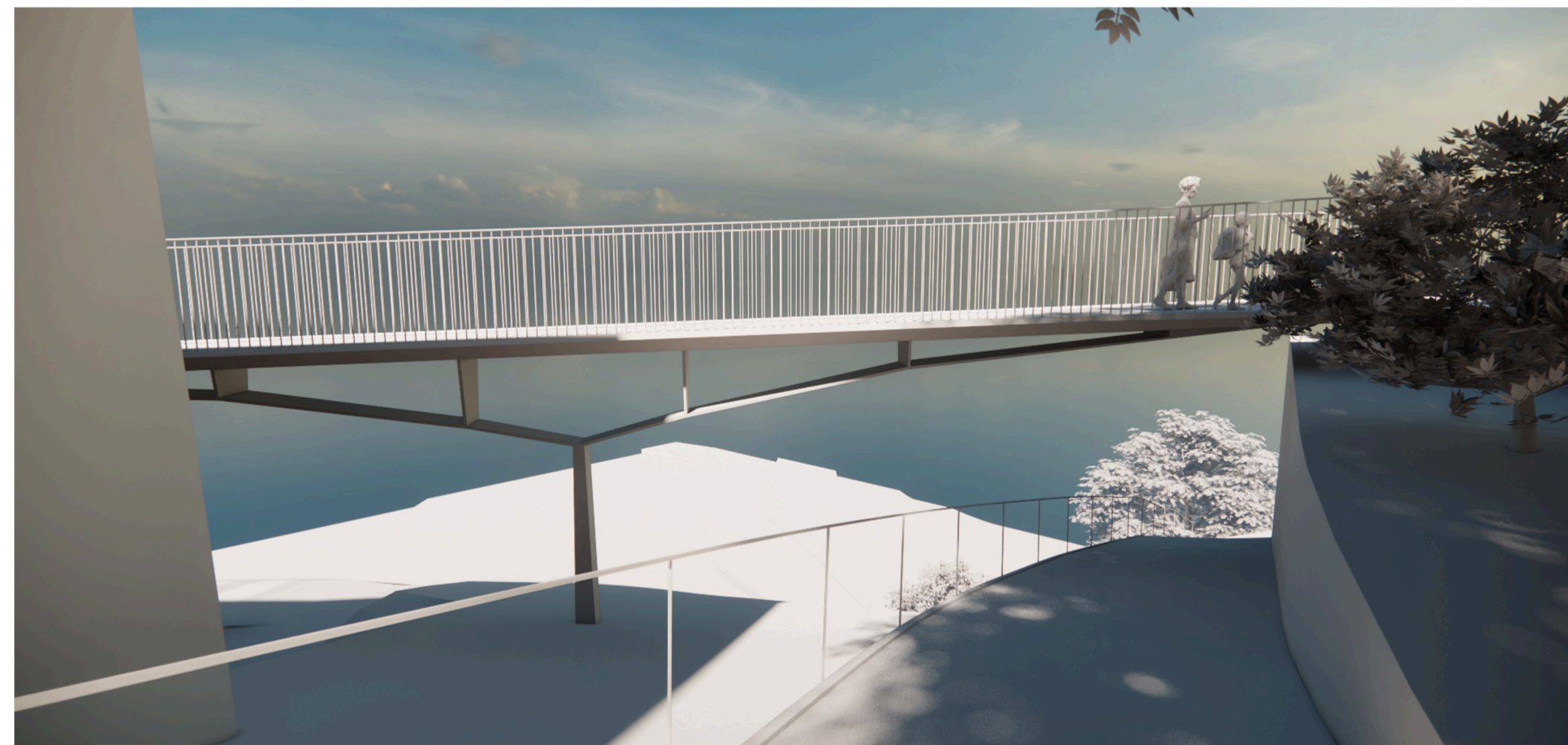
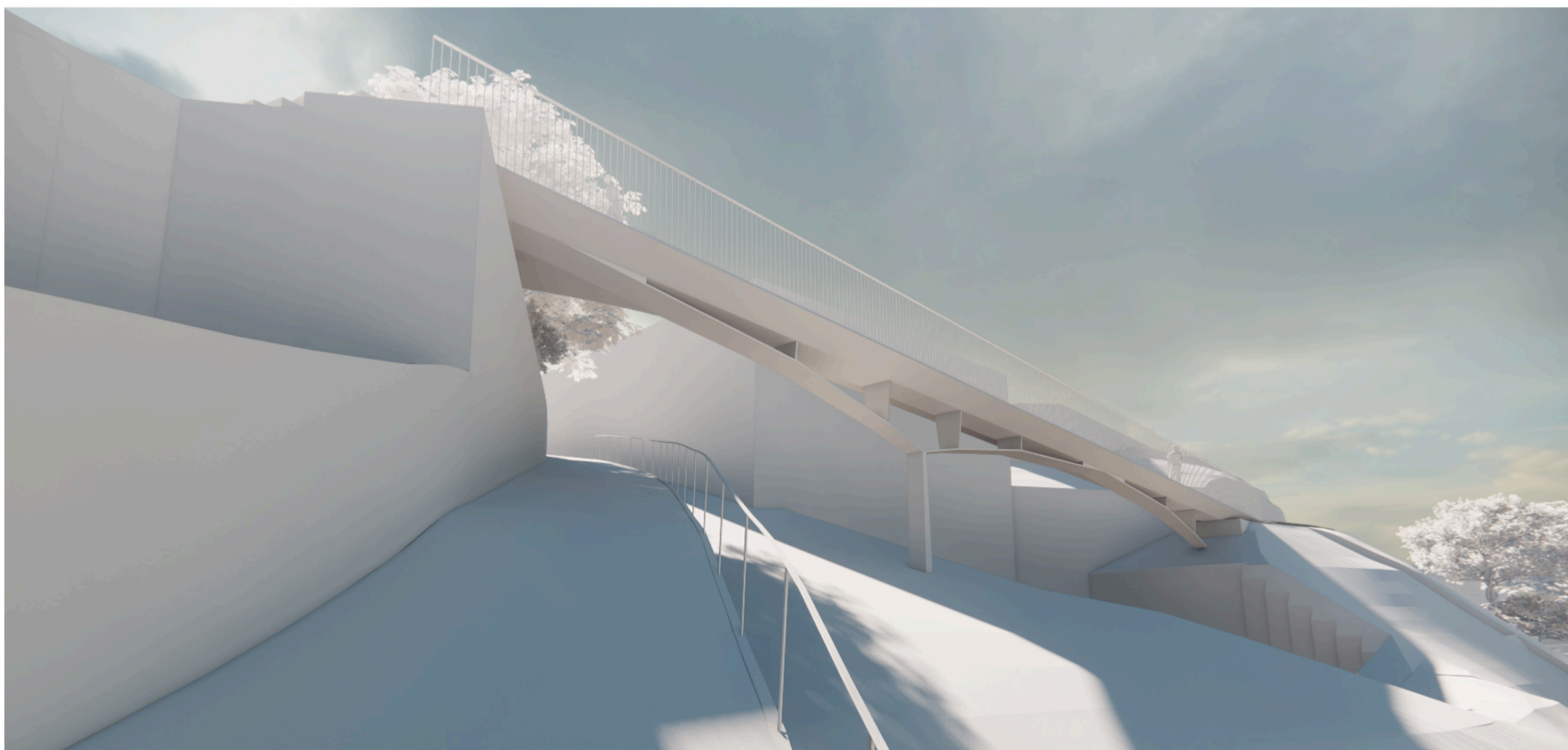
**Tragwerk  
Querschnitt**

Sprengwerk mit Blechstützen  
gevoutete Platte

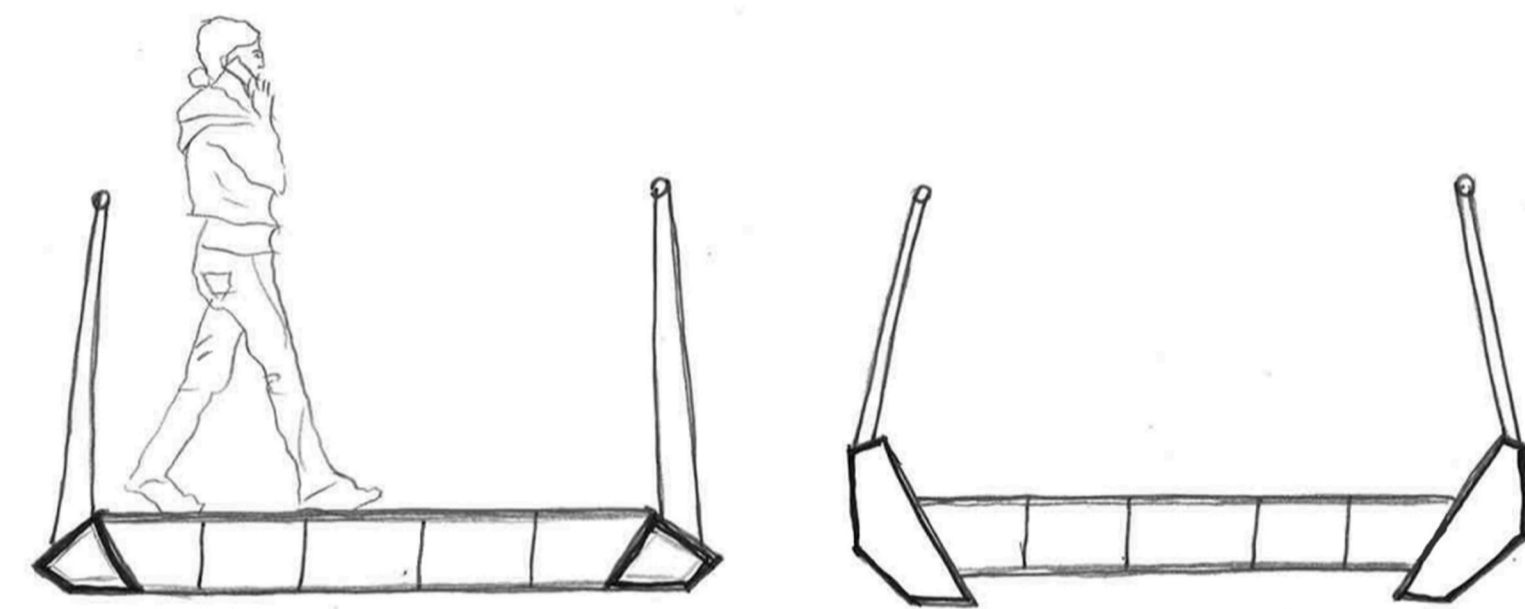
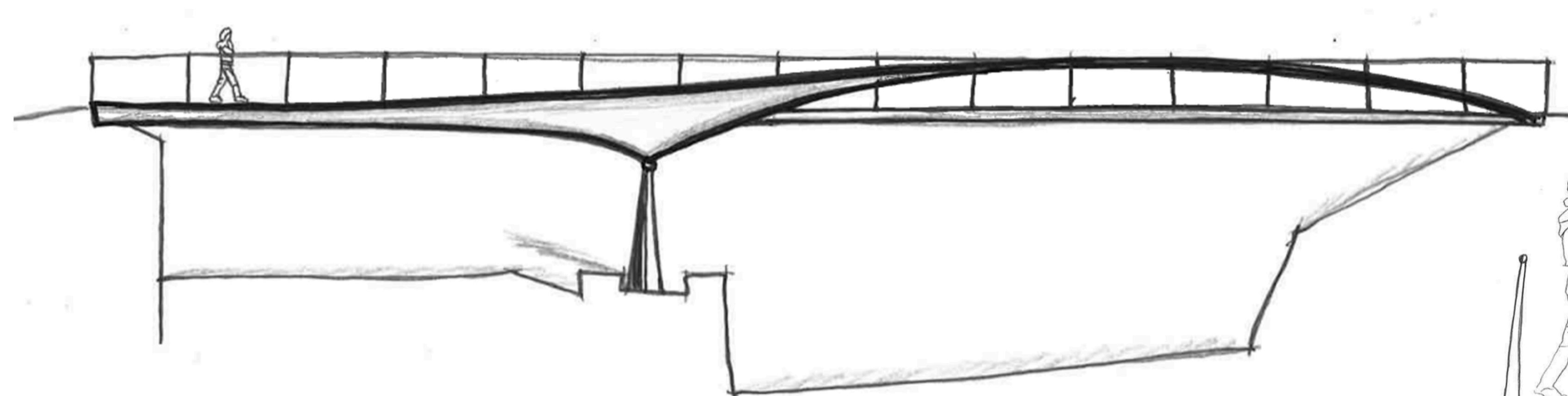
**Material**

Stahl | Beton









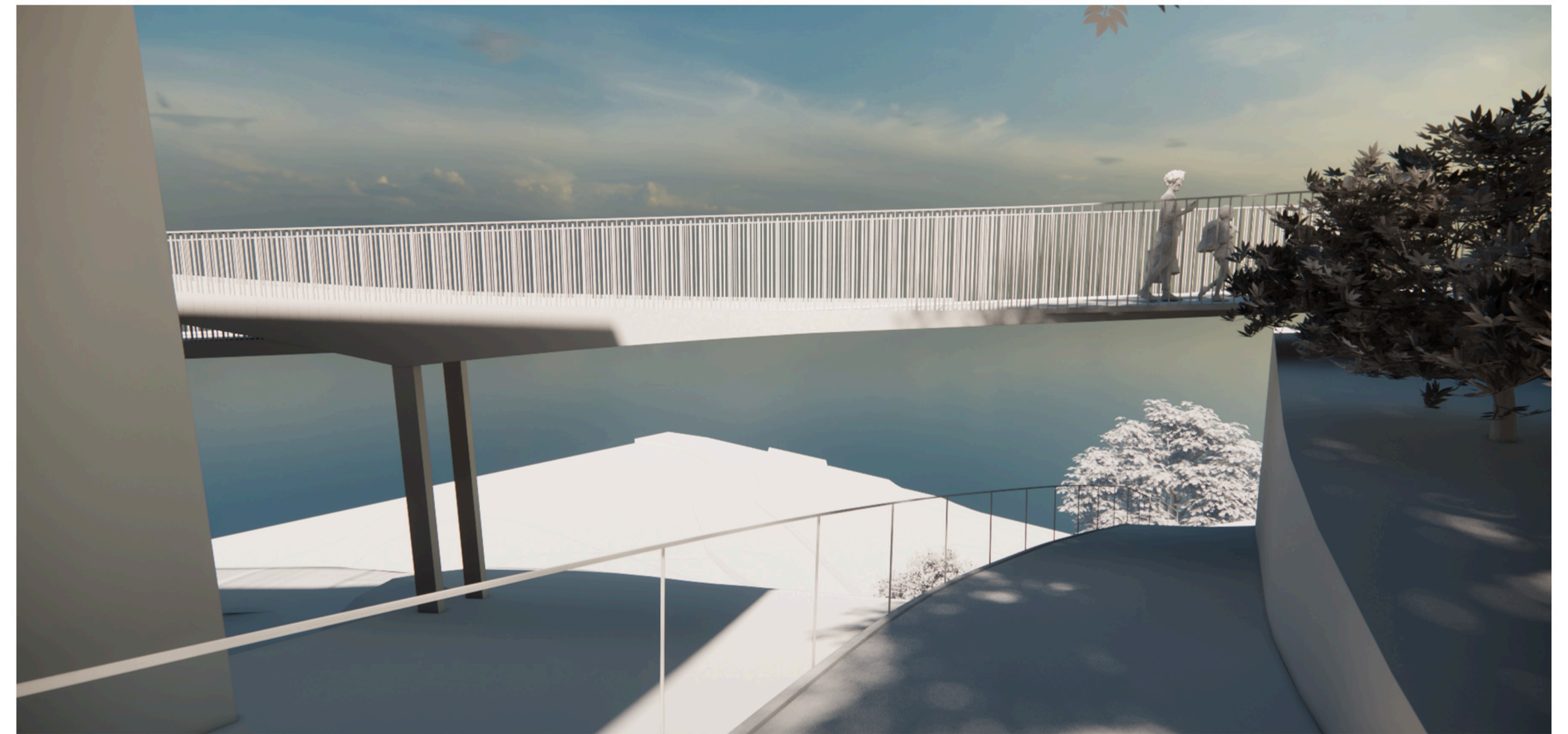
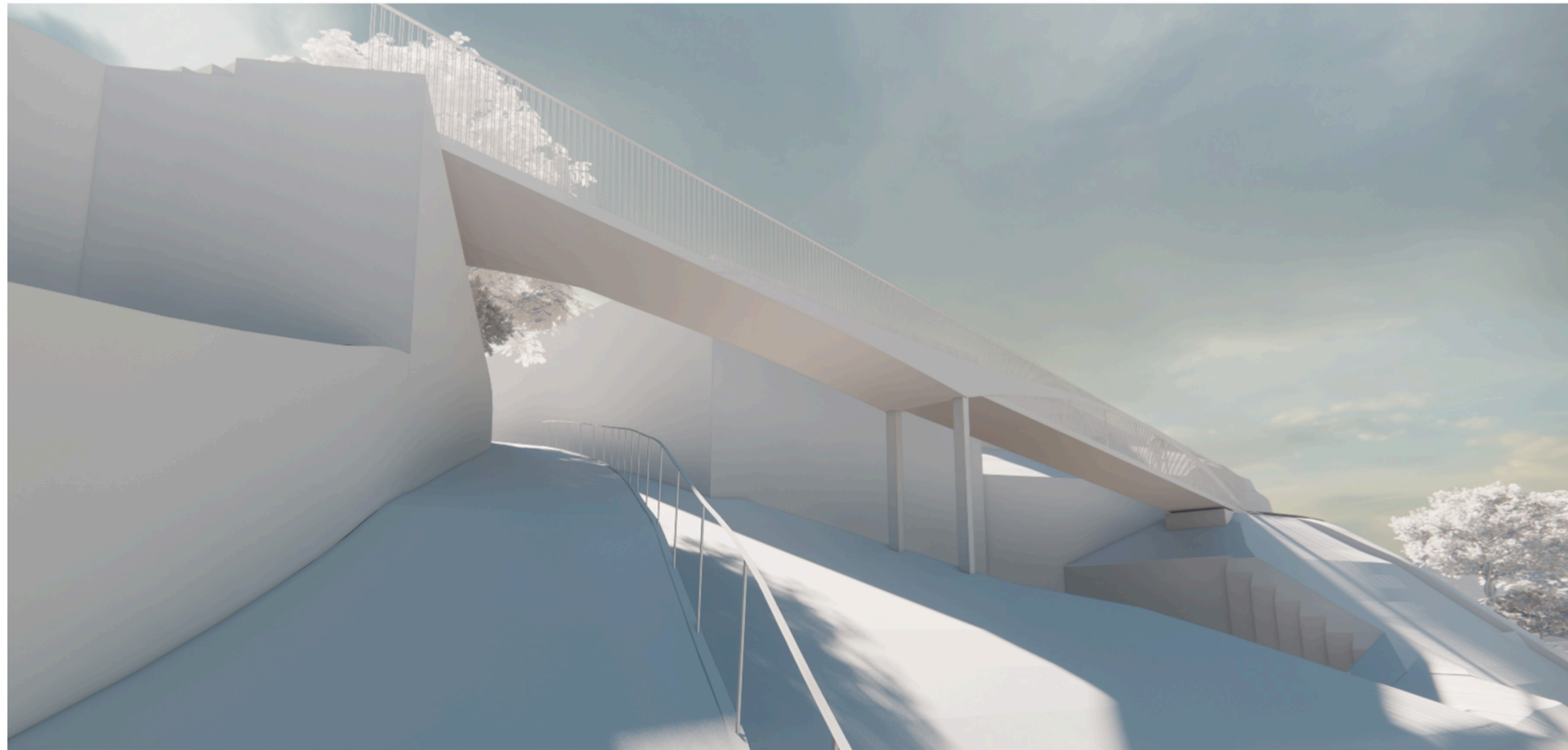
**Tragwerk**  
**Querschnitt**

geschwungener Trog mit Bogen  
Trogquerschnitt

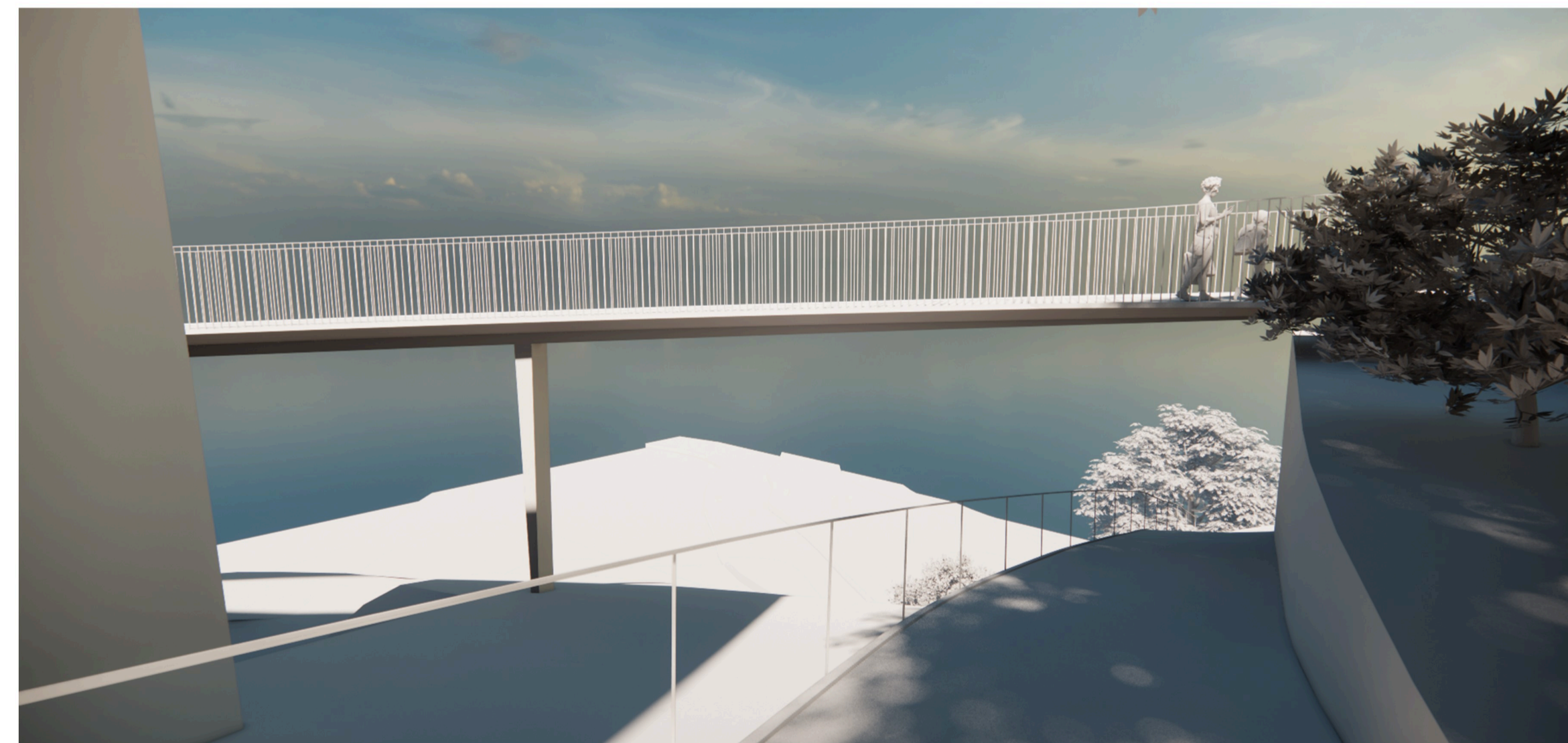
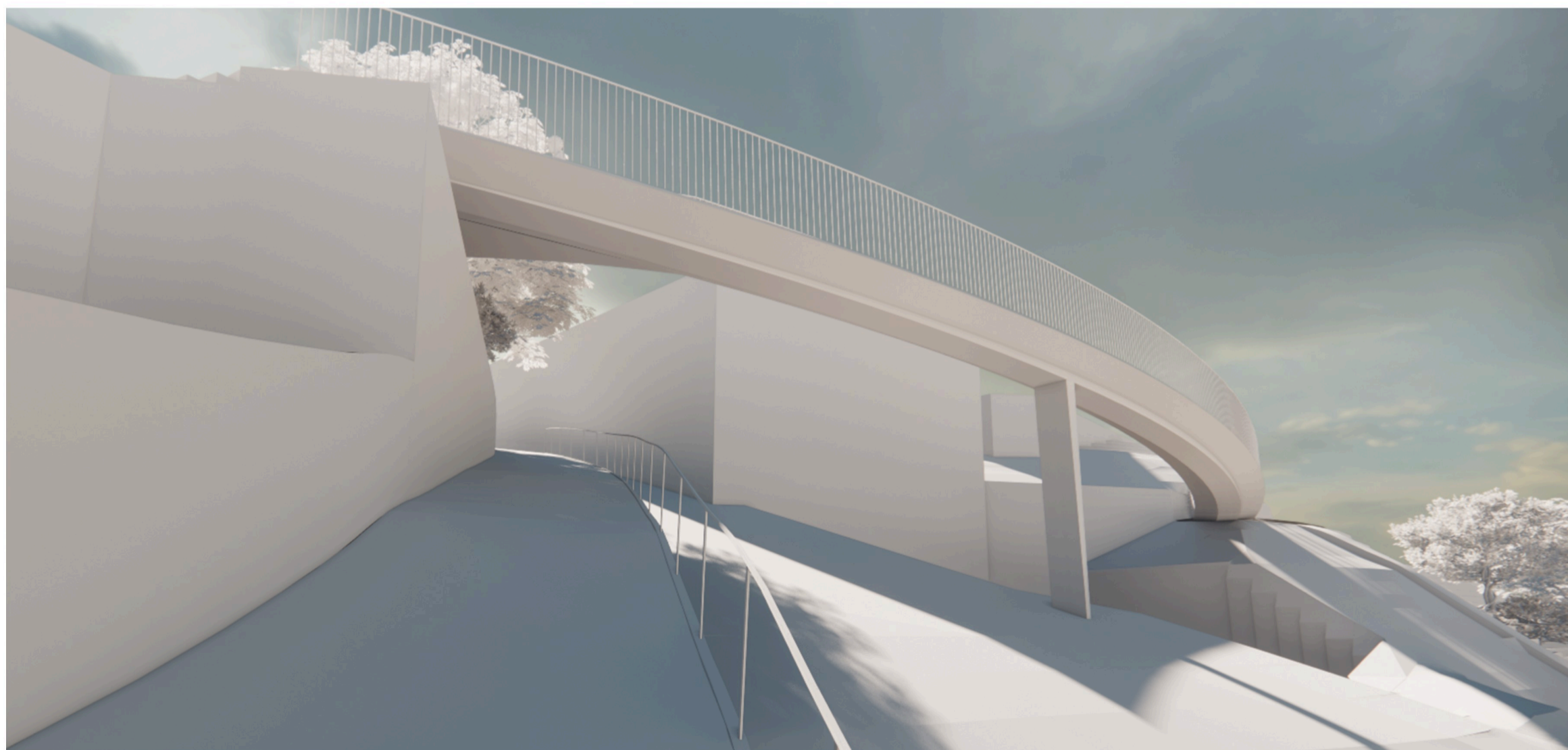
**Material**

Stahl

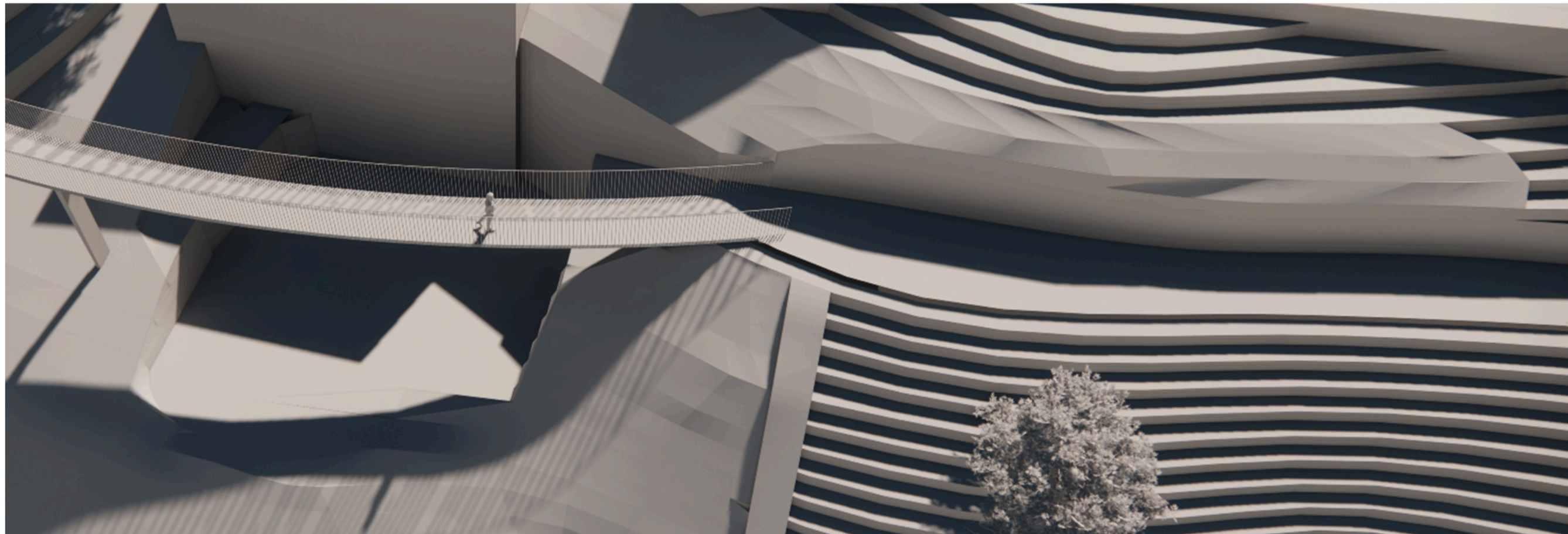




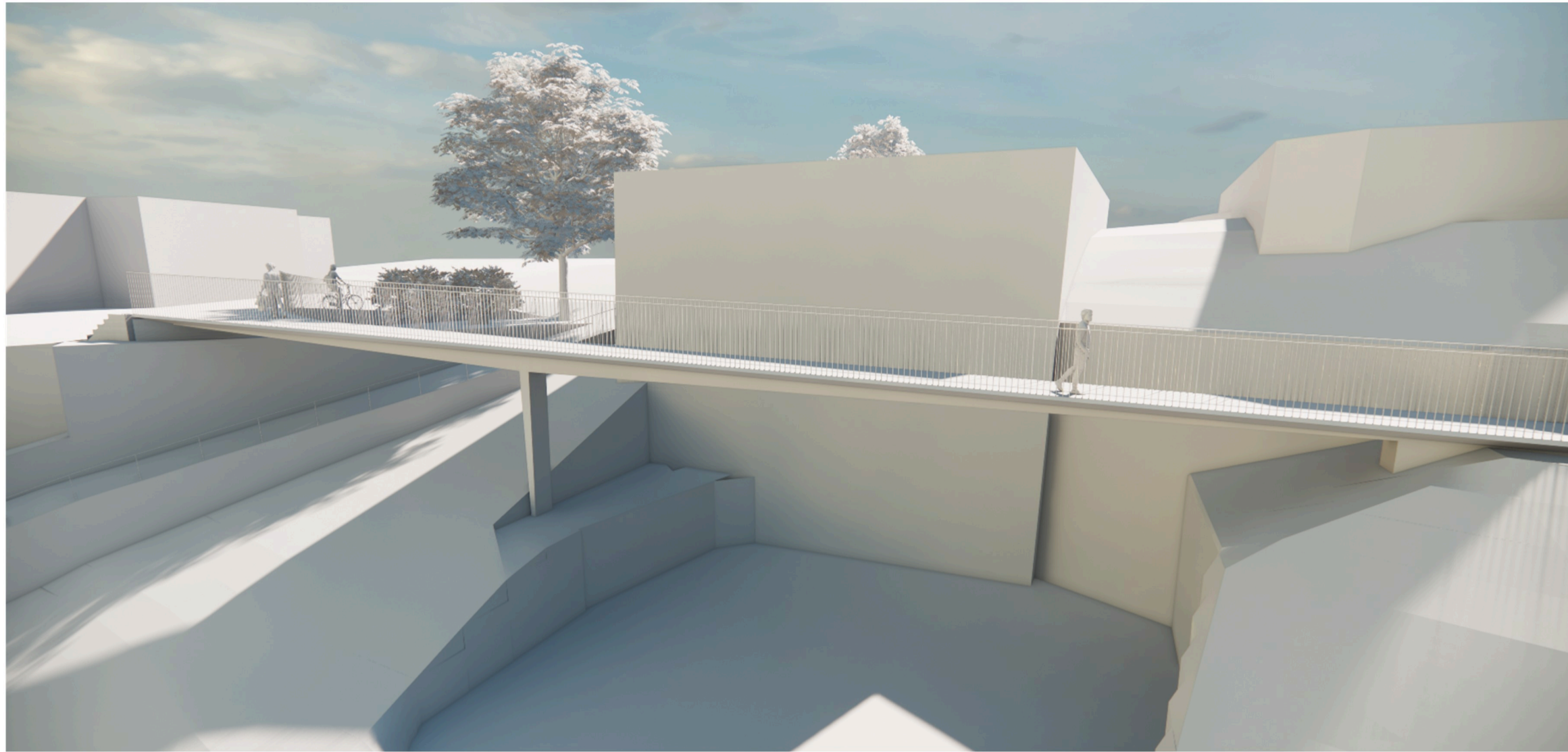




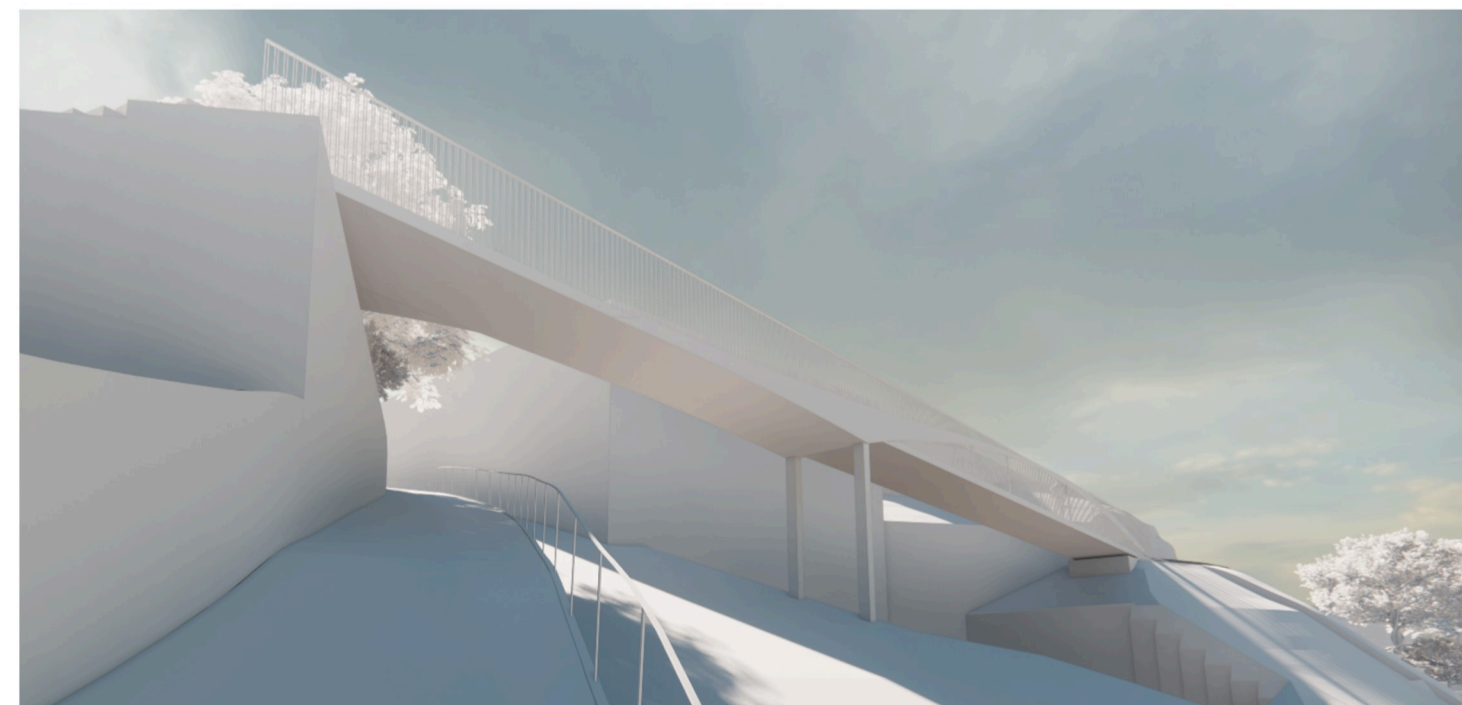
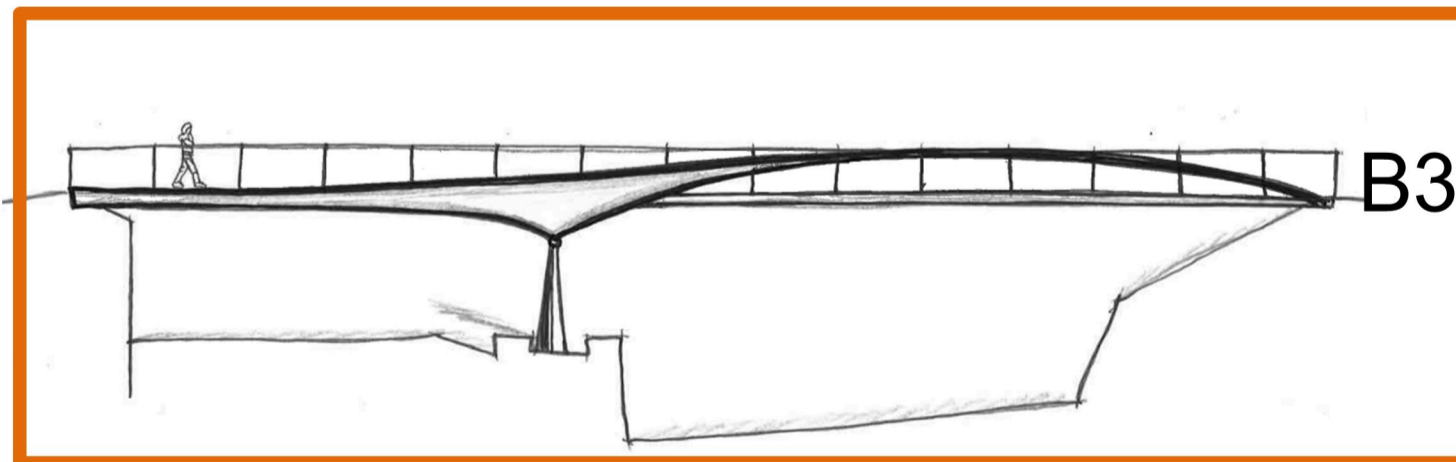
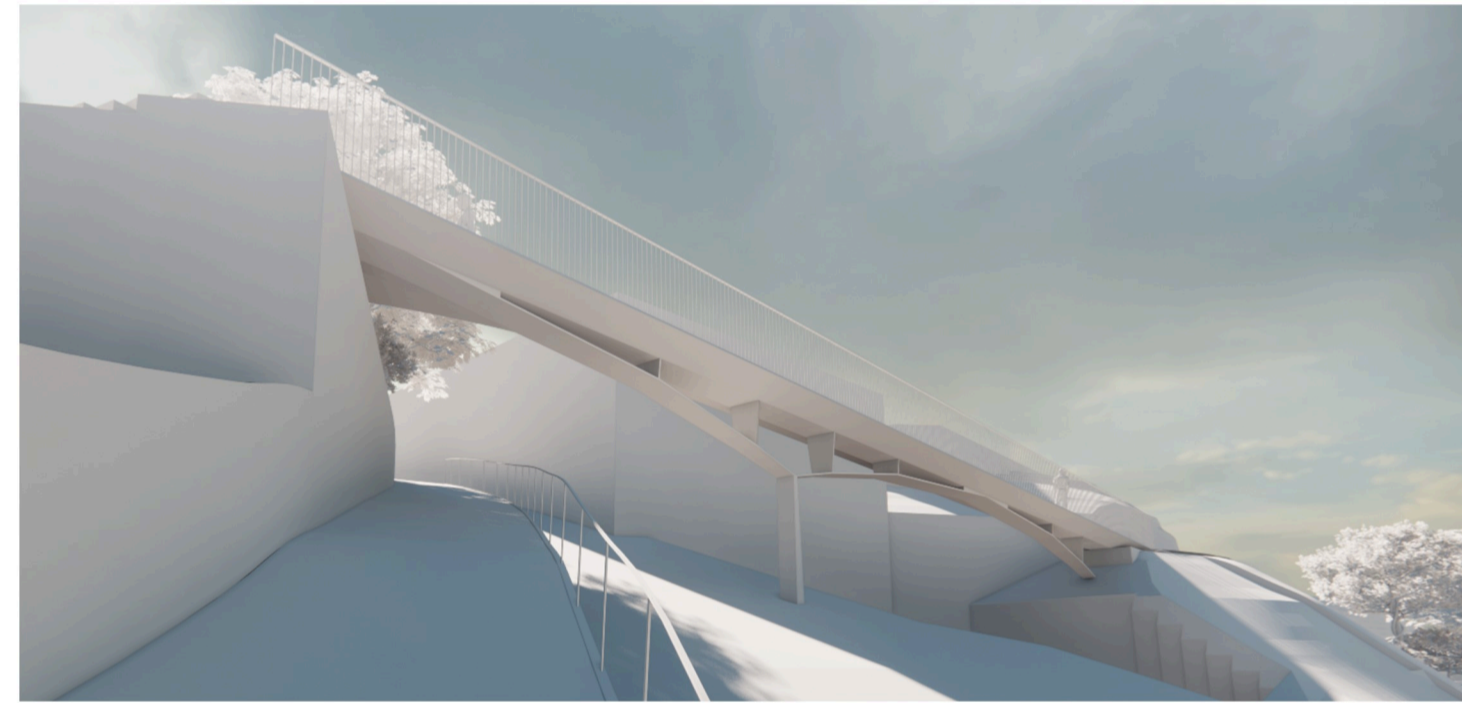
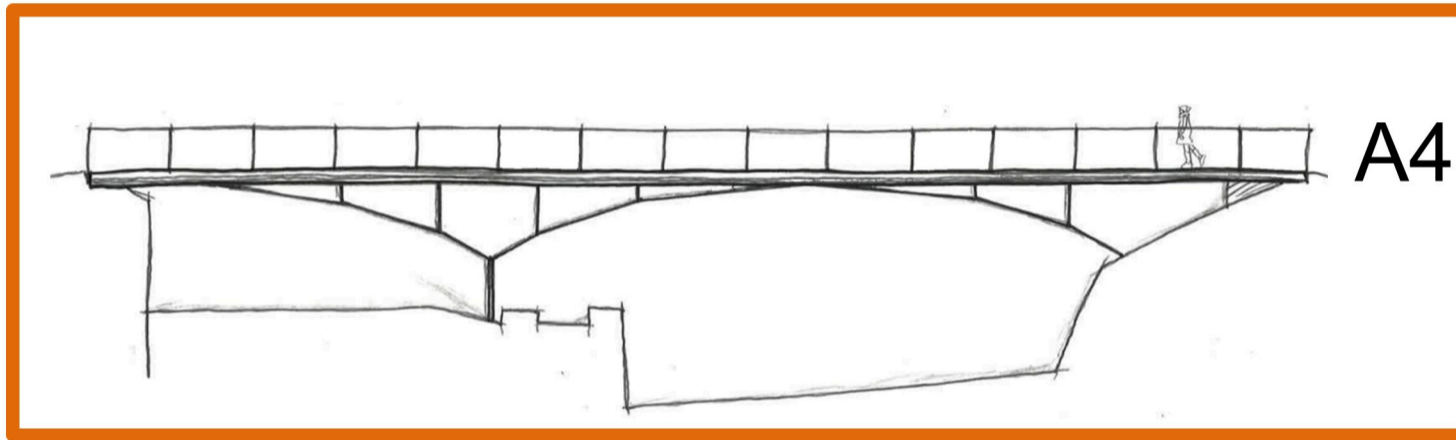
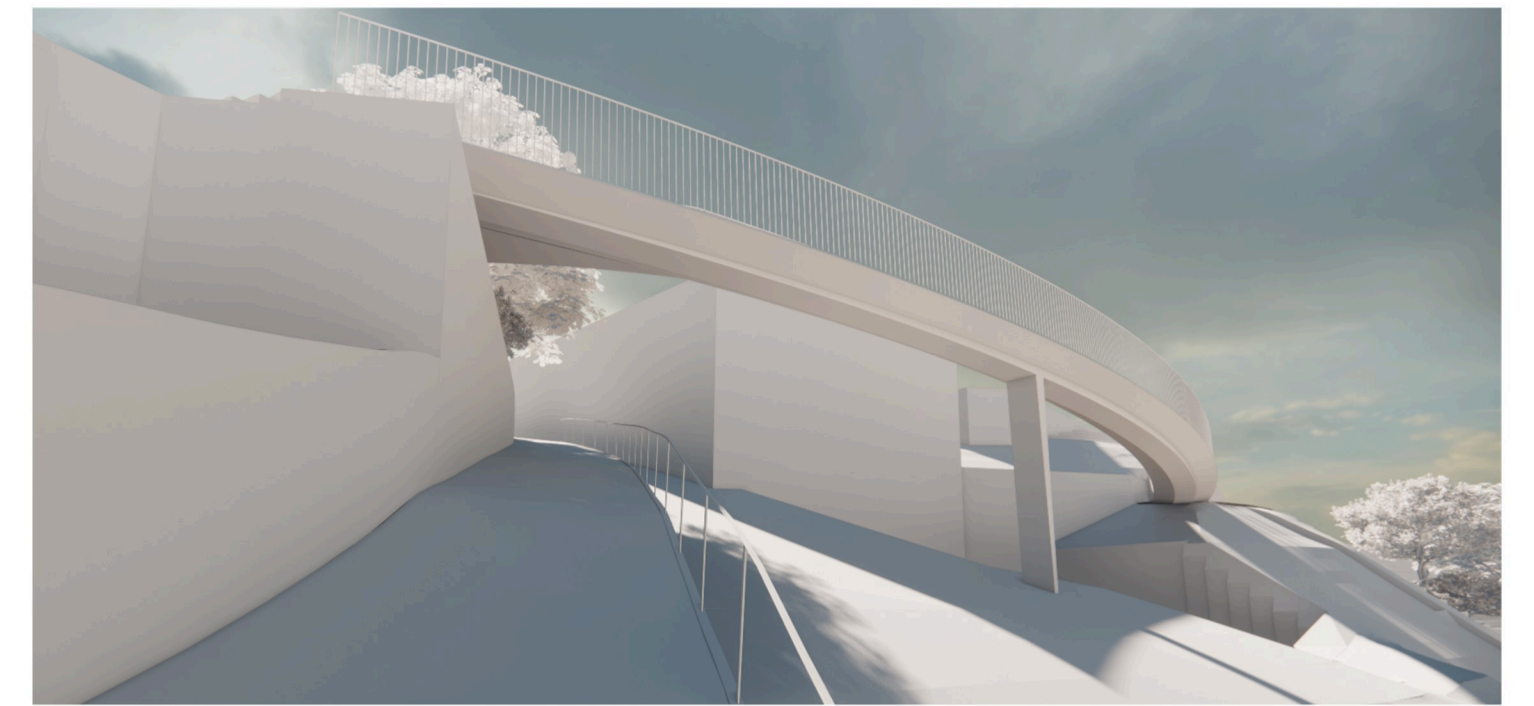
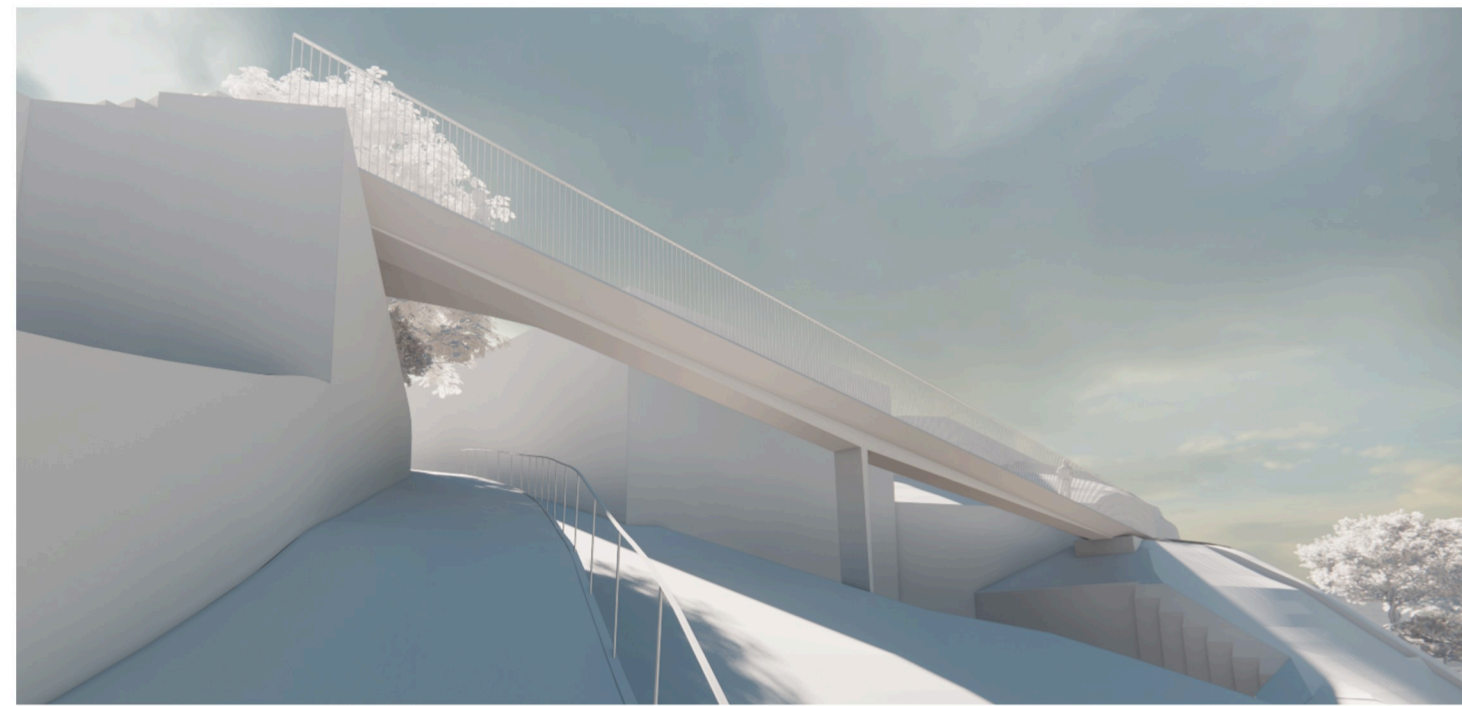
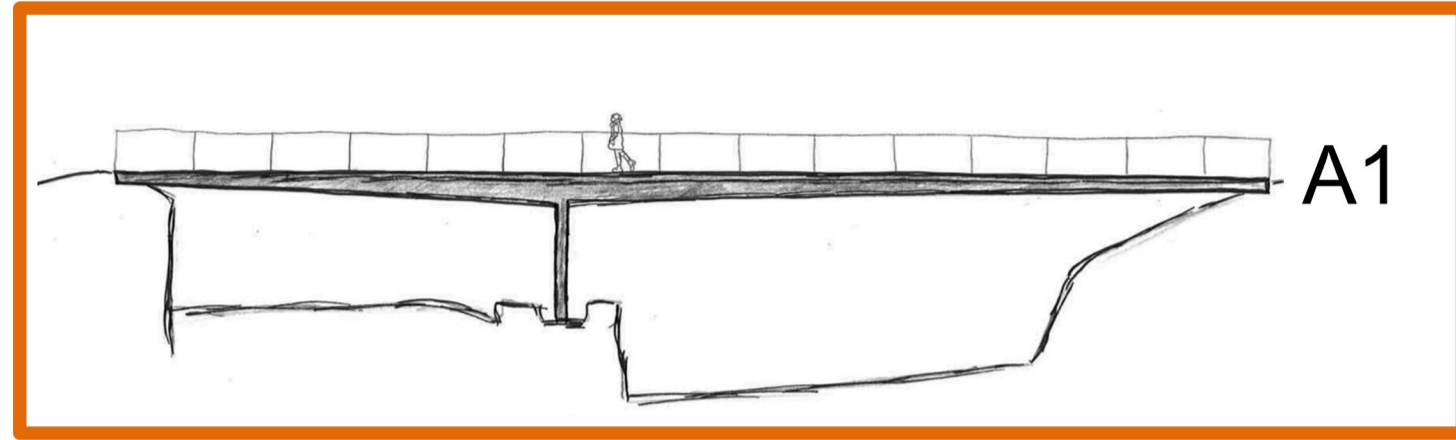












### Grobkostenschätzung

	gerade	/	gekrümmt
Variante A1:	100%	/	120%
Variante A4:	110%	/	135%
Variante B3:	125%	/	150%

100% ca. 1.050.000 € (brutto)



Schwabstraße 43  
70197 Stuttgart  
stuttgart@sbp.de

25, rue du Général Foy  
75008 Paris  
paris@sbp.de

Brunnenstraße 110c  
13355 Berlin  
berlin@sbp.de

Calle Alfonso XII,  
44º, Entreplanta  
28014 Madrid  
madrid@sbp.de

555 8th Avenue  
Suite #2402  
New York, NY 10018  
newyork@sbp.de

555 West 5th Street,  
35th Floor  
Los Angeles, CA 90013  
losangeles@sbp.de

10 Baoqing Road  
Room 606, Building #2  
Shanghai 200031  
shanghai@sbp.de

Rua Afonso Bras  
473 cjs. 113-114  
04511-011 São Paulo  
saopaulo@sbp.de

[www.sbp.de](http://www.sbp.de)